

PRODUCT INFORMATION AND MANUAL

***human TGF- β 1
Instant ELISA***

BMS249INST

Enzyme-linked immunosorbent assay for quantitative
detection of human TGF- β 1.

For research use only.

Not for diagnostic or therapeutic procedures.

128 Tests

**human TGF- β 1
BMS249INST**



Bender MedSystems GmbH
Campus Vienna Biocenter 2
A-1030 Vienna, Austria, Europe

TABLE OF CONTENTS

1	Intended Use	3
2	Summary	3
3	Principles of the Test	5
4	Reagents Provided	6
5	Storage Instructions	6
6	Specimen Collection	7
7	Materials Required But Not Provided	8
8	Precautions for Use	9
9	Preparation of Reagents and Samples	11
10	Test Protocol	12
11	Calculation of Results	16
12	Limitations	19
13	Performance Characteristics	20
14	Bibliography	24
15	Ordering Information	28
16	Reagent Preparation Summary	29
17	Test Protocol Summary	30

1 Intended Use

The human TGF- β 1 Instant ELISA is an enzyme-linked immunosorbent assay for the quantitative detection of human Transforming Growth Factor beta1 levels in cell culture supernatants, human serum, plasma or other body fluids. The human TGF- β 1 Instant ELISA is **for research use only. Not for diagnostic or therapeutic procedures.**

2 Summary

Transforming growth factor- β (TGF- β) belongs to a family of dimeric 25 kDa polypeptides that are ubiquitously distributed in tissues and synthesized by many different cells (13). Three isoforms of transforming Growth Factor- β (TGF-beta1, beta-2 and beta-3) exist in mammals. They play critical roles in growth regulation and development. Each isoform is encoded by a unique gene on different chromosomes. All three of these growth factors are secreted by most cell types, generally in a latent form, requiring activation before they can exert biological activity. The TGF-betas possess three major activities: they inhibit proliferation of most cells, but can stimulate the growth of some mesenchymal cells; they exert immunosuppressive effects and they enhance the formation of extracellular matrix. Two types of membrane receptors possessing kinase activity are involved in signal transduction. The TGF-betas are involved in wound repair processes and in starting inflammatory reaction and then in the resolution through chemotactic attraction of inflammatory cells and fibroblast (15).

TGF- β 1 is the first recognized transforming growth factor (5), its subunits of each 12.5 kDa are bound via disulphide bridges. TGF- β 1 is inhibitive to T- and B cell proliferation as well as to maturation and activation of macrophages. It furthermore inhibits activity of natural killer cells and lymphokine activated killer cells and blocks production of cytokines.

Measurement of TGF- β 1 in blood has been advocated for diagnosis of various diseases. TGF- β 1 has been shown to be an organizer of responses to neurodegeneration (10).

In this context, it turned out to be interesting in monitoring Alzheimer's disease (18), Down's syndrome, AIDS and Parkinson's disease (11). Serum and cerebrospinal fluid levels of Multiple Sclerosis patients were shown to be of great value to monitor remission and acute phases (4,

21). TGF- β 1 is thought to play an important role in bone metabolism (22), it is considered a putative regulator of osteoclastic-osteoblastic interaction, thus it can be regarded as a marker for osteoporosis (14). TGF- β 1 is involved in the pathogenesis of glomerular diseases (3, 23) such as diabetic nephropathy and glomerulosclerosis (28). TGF- β 1 has been described to be functionally connected to major immune system abnormalities as in autoimmunity (SLE) (8). Serum levels have been shown to correlate with disease activity in autoimmune hepatitis (2). Elevated serum levels of TGF- β 1 are determined in Chronic fatigue syndrome patients (6) and in Guillain-Baire syndrome patients (24). An inverse correlation with disease activity was described for TGF- β 1 levels in Kawasaki disease (17) and patients with IgA deficiency (19).

TGF- β 1 has been confirmed to promote fibrotic processes, thus it is implicated in the myelofibrosis with myeloid metaplasia (16). Increased serum levels of TGF- β 1 in patients affected by thrombotic thrombocytopenic purpura implicate its function on bone marrow haematopoiesis (29, 25). Determination of circulating TGF- β 1 turned out to reflect the various stages in solid tumors as has been shown for cervical cancer (7), elevations were furthermore found in prostatic cancer (27), bladder cancer (9), and liver cancer (20).

Decreased levels of TGF- β 1 in the serum of sepsis and acute stroke patients (1, 12) may reflect the changing immunological-inflammatory status of these patients. Decreased TGF- β 1 serum levels were described for patients with acute *Plasmodium falciparum* malaria (26).

3 Principles of the Test

An anti-human TGF- β 1 monoclonal coating antibody is adsorbed onto microwells. Human TGF- β 1 present in the sample or standard binds to antibodies adsorbed to the microwells; an HRP-conjugated monoclonal anti-human TGF- β 1 antibody binds to human TGF- β 1 captured by the first antibody. Following incubation unbound enzyme conjugated anti-human TGF- β 1 is removed during a wash step and substrate solution reactive with HRP is added to the wells.

A coloured product is formed in proportion to the amount of soluble human TGF- β 1 present in the sample. The reaction is terminated by addition of acid and absorbance is measured at 450 nm. A standard curve is prepared from seven human TGF- β 1 standard dilutions and human TGF- β 1 sample concentration determined.

Figure 1

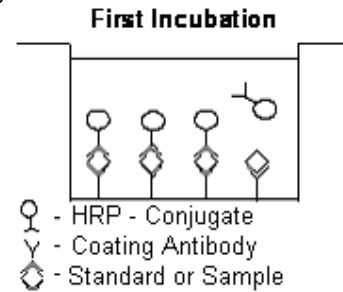


Figure 2

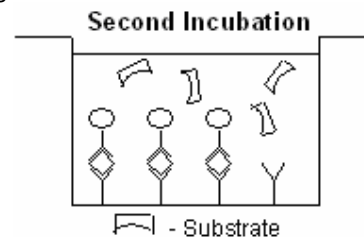
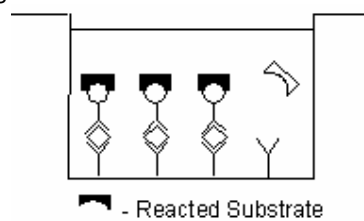


Figure 3



4 Reagents Provided

- 1 aluminium pouch with a **Microwell Plate coated with monoclonal Antibody** (murine) and **HRP-Conjugate** (anti-TGF- β 1 monoclonal (murine) antibody), lyophilized
- 2 aluminium pouches with a **human TGF- β 1 Standard curve (coloured)**
- 1 bottle (25 ml) **Wash Buffer Concentrate 20x** (phosphate-buffered saline with 1% Tween 20)
- 1 vial (3 ml) 1N **HCl** (pretreatment of samples)
- 1 vial (3 ml) 1N **NaOH** (pretreatment of samples)
- 1 vial (15 ml) **Substrate Solution** (tetramethyl-benzidine)
- 1 vial (5 ml) **Assay Buffer Concentrate 20x** (Use when an external predilution of the samples is needed)
- 1 vial (15 ml) **Stop Solution** (1M Phosphoric acid)
- 2 adhesive **Plate Covers**

5 Storage Instructions

Store ELISA plate and Standard curves or whole kit at -20°C . The plate and the standard curves can also be removed, stored at -20°C , remaining kit reagents can be stored between 2° and 8°C . Expiry of the kit and reagents is stated on labels.

The expiry of the kit components can only be guaranteed if the components are stored properly, and if, in case of repeated use of one component, the reagent is not contaminated by the first handling.

6 Specimen Collection

Cell culture supernatants, human serum, plasma, or other body fluids are suitable for use in the assay. Remove the serum or plasma from the clot or red cells as soon as possible after clotting and separation.

Samples containing a visible precipitate must be clarified prior to use in the assay. Do not use grossly hemolyzed or lipemic specimens.

Samples must be stored frozen at -20°C to avoid loss of bioactive human TGF- β 1. If samples are to be run within 24 hours, they may be stored at 2° to 8°C (for sample stability refer to 13).

Avoid repeated freeze-thaw cycles. Prior to assay, frozen serum or plasma should be brought to room temperature slowly and mixed gently.

7 Materials Required But Not Provided

- 5 ml and 10 ml graduated pipettes
- 5 μ l to 1000 μ l adjustable single channel micropipettes with disposable tips
- 50 μ l to 300 μ l adjustable multichannel micropipette with disposable tips
- Multichannel micropipette reservoir
- Beakers, flasks, cylinders necessary for preparation of reagents
- Device for delivery of wash solution (multichannel wash bottle or automatic wash system)
- Microwell strip reader capable of reading at 450 nm (620 nm as optional reference wave length)
- Glass-distilled or deionized water
- Statistical calculator with program to perform linear regression analysis

8 Precautions for Use

- All chemicals should be considered as potentially hazardous. We therefore recommend that this product is handled only by those persons who have been trained in laboratory techniques and that it is used in accordance with the principles of good laboratory practice. Wear suitable protective clothing such as laboratory overalls, safety glasses and gloves. Care should be taken to avoid contact with skin or eyes. In the case of contact with skin or eyes wash immediately with water. See material safety data sheet(s) and/or safety statements(s) for specific advice.
- Reagents are intended for research use only and are not for use in diagnostic or therapeutic procedures.
- Do not mix or substitute reagents with those from other lots or other sources.
- Do not use kit reagents beyond expiration date on label.
- Do not expose kit reagents to strong light during storage or incubation.
- Do not pipette by mouth.
- Do not eat or smoke in areas where kit reagents or samples are handled.
- Avoid contact of skin or mucous membranes with kit reagents or specimens.
- Rubber or disposable latex gloves should be worn while handling kit reagents or specimens.
- Avoid contact of substrate solution with oxidizing agents and metal.
- Avoid splashing or generation of aerosols.
- In order to avoid microbial contamination or cross-contamination of reagents or specimens which may invalidate the test use disposable pipette tips and/or pipettes.
- Use clean, dedicated reagent trays for dispensing substrate reagent.

- Glass-distilled water or deionized water must be used for reagent preparation.
- Substrate solution must be at room temperature prior to use.
- Decontaminate and dispose specimens and all potentially contaminated materials as they could contain infectious agents. The preferred method of decontamination is autoclaving for a minimum of 1 hour at 121.5 °C.
- Liquid wastes not containing acid and neutralized waste may be mixed with sodium hypochlorite in volumes such that the final mixture contains 1.0% sodium hypochlorite. Allow 30 minutes for effective decontamination. Liquid waste containing acid must be neutralized prior to the addition of sodium hypochlorite.

9 Preparation of Reagents and Samples

9.1 Wash Buffer

If crystals have formed in the Wash Buffer Concentrate, warm it gently until they have completely dissolved.

Pour entire contents (25 ml) of the Wash Buffer Concentrate into a clean 500 ml graduated cylinder. Bring to final volume to 500 ml with glass-distilled or deionized water. Mix gently to avoid foaming. The pH of the final solution should adjust to 7.4.

Transfer to a clean wash bottle and store at 2° to 25°C. Please note that Wash Buffer is stable for 30 days.

9.2 Assay Buffer

Pour the entire contents (5ml) of the **Assay Buffer Concentrate** into a clean 100 ml graduated cylinder. Bring to final volume of 100 ml with distilled water. Mix gently.

10 Test Protocol

- **Use plate immediately after removal from -20°C!**
 - **Do not wait until pellets have completely dissolved before applying samples - the binding reaction in the standard strips starts immediately after addition of water!**
 - **Do not try to dissolve pellets by pipetting up and down in the wells - some parts of the pellet could stick to the tip creating high variation of results**
 - **Perform the washing step with at least 400 µl of washing buffer as stated in the manual or fill the wells completely - otherwise any pellet residues sticking to the rim of the well will not be removed and create high variation of results**
 - **Allow the washing buffer to sit in the wells for a few seconds before aspiration**
 - **Remove covers of the standard strips carefully in order that all the lyophilised pellets remain in the wells**
- a. Prepare your samples before starting with the test procedure. Dilute serum, plasma and cell culture samples 1:10 with Assay Buffer (180 µl Assay Buffer + 20 µl sample). Add 20 µl 1N HCl to 200 µl of prediluted sample, mix and incubate for 1 hour at room temperature. Neutralize by addition of 20 µl 1N NaOH (this results in a 1:12 dilution of the samples).
 - b. Determine the number of Microwell Strips required to test the desired number of samples plus Microwell Strips for blanks and standards (coloured). Each sample, standard, blank, and optional control sample should be assayed in duplicate. Remove extra Microwell Strips from holder and store in foil bag with the desiccant provided at -20°C sealed tightly. Place microwell strips containing the standard curve in position A1/A2 to H1/H2 (see Table 1).
 - c. Add 50 µl of distilled water to the sample wells.
 - d. Add distilled water to all standard and blank wells as indicated on the label of the standard strips (A1, A2 to H1, H2).

Table 1

Table depicting an example of the arrangement of blanks, standards and samples in the microwell strips:

	1	2	3	4
A	Standard 1 (30.00 ng/ml)	Standard 1 (30.00 ng/ml)	Sample 1	Sample 1
B	Standard 2 (15.00 ng/ml)	Standard 2 (15.00 ng/ml)	Sample 2	Sample 2
C	Standard 3 (7.50 ng/ml)	Standard 3 (7.50 ng/ml)	Sample 3	Sample 3
D	Standard 4 (3.75 ng/ml)	Standard 4 (3.75 ng/ml)	Sample 4	Sample 4
E	Standard 5 (1.88 ng/ml)	Standard 5 (1.88 ng/ml)	Sample 5	Sample 5
F	Standard 6 (0.94 ng/ml)	Standard 6 (0.94 ng/ml)	Sample 6	Sample 6
G	Standard 7 (0.47 ng/ml)	Standard 7 (0.47 ng/ml)	Sample 7	Sample 7
H	Blank	Blank	Sample 8	Sample 8

- e. Add 100 μ l of each **pretreated Sample**, in duplicate, to the designated wells and mix the contents.
- f. Cover with a **Plate Cover** and incubate at room temperature (18°C to 25°C) for 4 hours, if available on a microplate shaker at 100 rpm.
- g. Remove **Plate Cover** and empty wells. Wash the microwell strips 3 times with approximately 400 μ l Wash Buffer per well with thorough aspiration of microwell contents between washes. Take care not to scratch the surface of the microwells.

After the last wash, tap microwell strips on absorbent pad or paper towel to remove excess Wash Buffer. Use the microwell strips immediately after washing or place upside down on a wet absorbent paper for no longer than 15 minutes. Do not allow wells to dry.

- h. Pipette 100 μ l of **TMB Substrate Solution** to all wells, including the blank wells.
- i. Incubate the microwell strips at room temperature (18° to 25°C) for about 10 minutes. Avoid direct exposure to intense light.

The colour development on the plate should be monitored and the substrate reaction stopped (see point j. of this protocol) before positive wells are no longer properly recordable. Determination of the ideal time period for colour development has to be done individually for each assay.

It is recommended to add the stop solution when the highest standard has developed a dark blue colour.

Alternatively the colour development can be monitored by the ELISA reader at 620 nm. The substrate reaction should be stopped as soon as Standard 1 has reached an OD of 0.6 – 0.65.

- j. Stop the enzyme reaction by quickly pipetting 100 μ l of **Stop Solution** into each well, including the blank wells. It is important that the Stop Solution is spread quickly and uniformly throughout the microwells to completely inactivate the enzyme. Results must be read immediately after the Stop Solution is added or within one hour if the microwell strips are stored at 2 - 8°C in the dark.
- k. Read absorbance of each microwell on a spectro-photometer using 450 nm as the primary wave length (optionally 620 nm as the

reference wave length; 610 nm to 650 nm is acceptable). Blank the plate reader according to the manufacturer's instructions by using the blank wells. Determine the absorbance of both the samples and the human TGF- β 1 standards.

Note: In case of incubation without shaking the obtained O.D. values may be lower than indicated below. Nevertheless the results are still valid.

11 Calculation of Results

- Calculate the average absorbance values for each set of duplicate standards and samples. Duplicates should be within 20 per cent of the mean.
- Create a standard curve by plotting the mean absorbance for each standard concentration on the ordinate against the human TGF- β 1 concentration on the abscissa. Draw a best fit curve through the points of the graph.
- To determine the concentration of circulating human TGF- β 1 for each sample, first find the mean absorbance value on the ordinate and extend a horizontal line to the standard curve. At the point of intersection, extend a vertical line to the abscissa and read the corresponding human TGF- β 1 concentration.
- ***Samples have been diluted 1:12, thus the concentration read from the standard curve must be multiplied by the dilution factor (x 12).**
- It is suggested that each testing facility establishes a control sample of known human TGF- β 1 concentration and runs this additional control with each assay. If the values obtained are not within the expected range of the control, the assay results may be invalid.
- A representative standard curve is shown in Figure 4. This curve cannot be used to derive test results. Every laboratory must prepare a standard curve for each group of microwell strips assayed.

* N.B: There is a common dilution factor for samples due to the conjugate which must then be included in the calculation. The samples contribute 100 μ l to the final volume per well. These 100 μ l are composed of 100 μ l of the 1:12 prediluted sample. This is a 1:12 dilution.

The remaining 50 μ l to give 150 μ l are due to the addition of 50 μ l conjugate to all wells.

Figure 4

Representative standard curve for human TGF- β 1 Instant ELISA. Human TGF- β 1 was diluted in serial 2-fold steps in Assay Buffer, each symbol represents the mean of 3 parallel titrations. Do not use this standard curve to derive test results. A standard curve must be run for each group of microwell strips assayed.

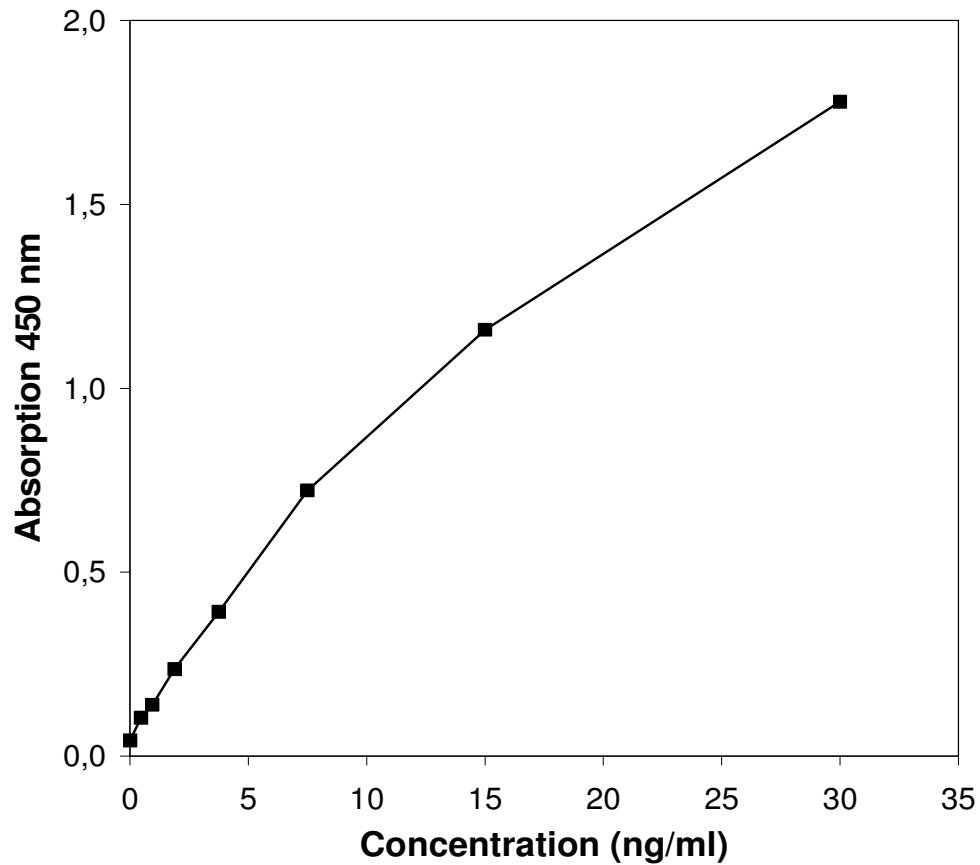


Table 2

Typical data using the human TGF- β 1 INSTANT ELISA

Measuring wavelength: 450 nm

Reference wavelength: 620 nm

Standard	human TGF- β 1 Concentration (ng/ml)	O.D. (450 nm)	O.D. Mean	C.V. (%)
1	30.00	1.776	1.779	2.0
	30.00	1.782		
2	15.00	1.156	1.159	2.6
	15.00	1.161		
3	7.50	0.689	0.722	7.0
	7.50	0.754		
4	3.75	0.398	0.392	3.3
	3.75	0.386		
5	1.88	0.229	0.236	6.6
	1.88	0.242		
6	0.94	0.143	0.139	3.2
	0.94	0.135		
7	0.47	0.103	0.104	3.1
	0.47	0.104		
Blank	0	0.046	0.042	
	0	0.037		

The OD values of the standard curve may vary according to the conditions of assay performance (e.g. operator, pipetting technique, washing technique or temperature effects). Furthermore shelf life of the kit may affect enzymatic activity and thus colour intensity. Values measured are still valid.

12 Limitations

- Since exact conditions may vary from assay to assay, a standard curve must be established for every run.
- Bacterial or fungal contamination of either screen samples or reagents or cross-contamination between reagents may cause erroneous results.
- Disposable pipette tips, flasks or glassware are preferred, reusable glassware must be washed and thoroughly rinsed of all detergents before use.
- Improper or insufficient washing at any stage of the procedure will result in either false positive or false negative results. Empty wells completely before dispensing fresh wash solution, fill with Wash Buffer as indicated for each wash cycle and do not allow wells to sit uncovered or dry for extended periods.
- The use of radioimmunotherapy has significantly increased the number of patients with human anti-mouse IgG antibodies (HAMA). HAMA may interfere with assays utilizing murine monoclonal antibodies leading to both false positive and false negative results. Serum samples containing antibodies to murine immunoglobulins can still be analysed in such assays when murine immunoglobulins (serum, ascitic fluid, or monoclonal antibodies of irrelevant specificity) are added to the Sample.

13 Performance Characteristics

13.1 Sensitivity

The limit of detection of human TGF- β 1 defined as the analyte concentration resulting in an absorbance significantly higher than that of the dilution medium (mean plus 2 standard deviations) was determined to be 0.1 ng/ml (mean of 6 independent assays).

13.2 Reproducibility

13.2.1 Intra-assay

Reproducibility within the assay was evaluated in 3 independent experiments. Each assay was carried out with 6 replicates of 8 serum samples containing different concentrations of human TGF- β 1. 2 standard curves were run on each plate. Data below show the mean human TGF- β 1 concentration and the coefficient of variation for each sample (see Table 3). The calculated overall intra-assay coefficient of variation was 4.6%.

Table 3

The mean human TGF- β 1 concentration and the coefficient of variation for each sample.

Positive Sample	Experiment	human TGF- β 1 Concentration (ng/ml)	Coefficient of Variation (%)
1	1	112	8
	2	102	3
	3	103	4
2	1	175	6
	2	151	3
	3	143	6
3	1	143	5
	2	125	5
	3	126	5
4	1	119	4
	2	104	4
	3	97	2
5	1	120	4
	2	106	3
	3	102	6
6	1	103	5
	2	88	4
	3	94	1
7	1	53	5
	2	46	3
	3	46	4
8	1	112	9
	2	94	6
	3	93	6

13.2.2 Inter-assay

Assay to assay reproducibility within one laboratory was evaluated in 3 independent experiments by 3 technicians. Each assay was carried out with 6 replicates of human serum samples containing different concentrations of human TGF- β 1. 2 standard curves were run on each plate. Data below (see Table 4) show the mean human TGF- β 1 concentration and the coefficient of variation calculated on 18 determinations of each sample. The calculated overall coefficient of variation was 8.7%.

Table 4

The mean human TGF- β 1 concentration and the coefficient of variation calculated on 18 determinations of each sample.

Sample	human TGF- β 1 Concentration (ng/ml)	Coefficient of Variation (%)
1	105	5.1
2	156	10.8
3	131	7.6
4	107	10.7
5	109	8.9
6	95	7.7
7	48	8.1
8	100	10.9

13.3 Spike Recovery

The spike recovery was evaluated by spiking 4 levels of human TGF- β 1 into human serum. Recoveries were determined in 3 independent experiments with 6 replicates each. The unspiked serum was used as blank in these experiments. Average recovery ranged from 92% to 126% with an overall mean recovery of 109%.

13.4 Dilution Parallelism

4 serum samples with different levels of human TGF- β 1 were analysed at serial 2 fold dilutions with 4 replicates each. The recovery ranged between 85% and 125% with an overall recovery of 110%.

13.5 Sample Stability

13.5.1 Freeze-Thaw Stability

Aliquots of serum samples (unspiked or spiked) were stored at -20 °C and thawed 5 times, and the human TGF- β 1 levels determined. There was no significant loss of human TGF- β 1 immunoreactivity by freezing and thawing.

13.5.2 Storage Stability

Aliquots of serum samples (spiked or unspiked) were stored at -20 °C, 2-8 °C, room temperature (RT) and at 37 °C, and the human TGF- β 1 level determined after 24 h. There was no significant loss of human TGF- β 1 immunoreactivity during storage under above conditions.

13.6 Specificity

The assay detects both natural and recombinant human TGF- β 1. To define the specificity of this ELISA several proteins were tested for cross reactivity. There was no cross reactivity observed, notably not for TGF β -2 and TGF β -3.

14 Bibliography

- 1) Astiz M, Saha D, Lustbader D, Lin R, Rackow E. Monocyte response to bacterial toxins, expression of cell surface receptors, and release of anti-inflammatory cytokines during sepsis. *J Lab Clin Med* 1996 Dec;128(6):594-600.
- 2) Bayer EM, Herr W, Kanzler S, Waldmann C, Meyer Zum Buschenfelde KH, Diense HP; Lohse AW. Transforming growth factor-beta1 in autoimmune hepatitis: correlation of liver tissue expression and serum levels with disease activity. *J Hepatol* 1998 May;28(5):803-811.
- 3) Border WA. Transforming growth factor-beta and the pathogenesis of glomerular diseases. *Curr Opin Nephrol Hypertens* 1994 Jan;3(1):54-58.
- 4) Carrieri PB, Provitera V, Bruno R, Perrella M, Tartaglia G, Busto A, Perrella O. Possible role of transforming growth factor-beta in relapsing-remitting multiple sclerosis. *Neurol Res* 1997 Dec;19(6):599-600.
- 5) Chambaz EM, Souchelnitskiy S, Pellerin S, Defaye G, Cochet C, Feige JJ. Transforming growth factors-beta s: a multifunctional cytokine family. Implication in the regulation of adrenocortical cell endocrine functions. *Horm Res* 1996;45(3-5):222-226.
- 6) Chao CC, Janoff EN, Hu SX, Thomas K, Gallagher M, Tsang M, Peterson PK. Altered cytokine release in peripheral blood mononuclear cell cultures from patients with the chronic fatigue syndrome. *Cytokine* 1991 Jul;3(4):292-298.
- 7) Chopra V, Dinh TV, Hannigan EV. Circulating serum levels of cytokines and angiogenic factors in patients with cervical cancer. *Cancer Invest* 1998;16(3):152-159.
- 8) Del Giudice G, Crow MK. Role of transforming growth factor beta (TGF beta) in systemic autoimmunity. *Lupus* 1993 Aug;2(4):213-220.
- 9) Eder IE, Stenzl A, Hobisch A, Cronauer MV, Bartsch G, Klocker H. Expression of transforming growth factors beta-1, beta 2 and beta 3 in human bladder carcinomas. *Br J Cancer* 1997;75(12):1753-1760.

- 10) Finch CE, Laping NJ, Morgan TE, Nichols NR, Pasinetti GM. TGF-beta 1 is an organizer of responses to neurodegeneration. *J Cell Biochem* 1993 Dec;53(4):314-322.
- 11) Flanders KC, Ren RF, Lippa CF. Transforming growth factor-betas in neurodegenerative disease. *Prog Neurobiol* 1998 Jan;54(1):71-85.
- 12) Kim JS, Yoon SS, Kim YH, Ryu JS. Serial measurement of interleukin-6, transforming growth factor-beta, and S-100 protein in patients with acute stroke. *Stroke* 1996 Sep;27(9):1553-1557.
- 13) Kropf J, JO Schurek, A Wollner, and AM Gressner. Immunological measurement of transforming growth factor-beta I (TGF-b1) in blood; assay development and comparison. *Clinical Chemistry* 1997;43(10):1965-1974.
- 14) Langdahl BL, Knudsen JY, Jensen HK, Gregersen N, Eriksen EF. A sequence variation: 713-8delC in the transforming growth factor-beta 1 gene has higher prevalence in osteoporotic women than in normal women and is associated with very low bone mass in osteoporotic women and increased bone turnover in both osteoporotic and normal women. *Bone* 1997 Mar;20(3):289-294.
- 15) Lawrence DA. Transforming growth factor-beta: a general review. *Eur Cytokine Netw* 1996 Sep;7(3):363-374.
- 16) Martyre MC, Magdelenat H, Bryckaert MC, Laine-Bidron C, Calvo F. Increased intraplatelet of platelet-derived growth factor and transforming growth factor-beta in patients with myelofibrosis with myeloid metaplasia. *Br J Haematol* 1991 Jan;77(1):80-86.
- 17) Matsubara T, Umezawa Y, Tsuru S, Motohashi T, Yabuta K, Furukawa S. Decrease in the concentrations of transforming growth factor-beta 1 in the sera of patients with Kawasaki disease. *Scand J Rheumatol* 1997;26(4):314-317.
- 18) Mattson MP, Barger SW, Furukawa K, Bruce AJ, Wyss-Coray T, Mark RJ, Mucke L. Cellular signaling roles of TGF beta, TNF alpha and beta APP in brain injury responses and Alzheimer's disease. *Brain Res Rev* 1997 Feb;23(1-2):47-61.

- 19) Muller F, Aukrust P, Nilssen DE, Froland SS. Reduced serum level of transforming growth factor-beta in patients with IgA deficiency. *Clin Immunol Immunopathol* 1995 Aug;76(2):203-208.
- 20) Murawaki Y, Ikuta Y, Nishimura Y, Koda M, Kawasaki H. Serum markers for fibrosis and plasma transforming growth factor-beta 1 in patients with hepatocellular carcinoma in comparison with patients with liver cirrhosis. *J Gastroenterol Hepatol* 1996 May;11(5):443-450.
- 21) Ossege LM, Sindern E, Voss B, Malin JP. Corticosteroids induce expression of transforming-growth-factor-beta1 mRNA in peripheral blood mononuclear cells of patients with multiple sclerosis. *J Neuroimmunol* 1998 Apr 1;84(1):1-6.
- 22) Pfeilschifter J, Diel I, Scheppach B, Bretz A, Krempien R, Erdmann J, Schmid G, Reske N, Bismar H, Seck T, Krempien B, Ziegler R. Concentration of transforming growth factor beta in human bone tissue: relationship to age, menopause, bone turnover, and bone volume. *J Bone Miner Res* 1998 Apr;13(4):716-730.
- 23) Shankland SJ, Johnson RJ. TGF-beta in glomerular disease. *Miner Electrolyte Metab* 1998;24(2-3):168-173.
- 24) Sindern E, Schweppe K, Ossege LM, Malin JP. Potential role of transforming growth factor-beta 1 in terminating the immune response in patients with Guillain-Barre syndrome. *J Neurol* 1996 Mar;243(3):264-268.
- 25) Tornquist SJ, Oaks JL, Crawford TB. Elevation of cytokines associated with the thrombocytopenia of equine infectious anaemia. *J Gen Virol* 1997 Oct;78(Pt 10):2541-2548.
- 26) Wenisch C, Parschalk B, Burgmann H, Looareesuwan S, Graninger W. Decreased serum levels of TGF-beta in patients with acute *Plasmodium falciparum* malaria. *J Clin Immunol* 1995 Mar;15(2):69-73.
- 27) Wolff JM, Fandel T, Borchers H, Brehmer B Jr, Jakse G. Transforming growth factor-beta 1 serum concentration in patients with prostatic cancer and benign prostatic hyperplasia. *Br J Urol* 1998 Mar;81(3):403-405.

- 28) Yokoyama H, Deckert T. Central role of TGF-beta in the pathogenesis of diabetic nephropathy and macrovascular complications: a hypothesis. *Diabet Med* 1996 Apr;13(4):313-320.
- 29) Zauli G, Gugliotta L, Catani L, Vianelli N, Borgatti P, Belmonte MM, Tura S. Increased serum levels of transforming growth factor beta-1 in patients affected by thrombotic thrombocytopenic purpura (TTP): its implications on bone marrow haematopoiesis. *Br J Haematol* 1993 Jul;84(3):381-386.

For literature update refer to **www.bendermedsystems.com/44.html**

15 Ordering Information

For orders please contact:

Europe-Headquarters

Bender MedSystems GmbH
Campus Vienna Biocenter 2
A-1030 Vienna, Austria, Europe
phone: +43 1 796 40 40 ext. 114
fax: +43 1 796 40 40 ext. 400
e-mail: order@bendermedsystems.com

USA

Bender MedSystems, Inc.
849 Hinckley Road
Burlingame, CA 94010, USA
toll-free phone: +1 (866) 952 2112
toll-free fax: +1 (877) 952 2112
phone: +1 (650) 952 2112
fax: +1 (650) 952 2252

For technical information please contact:

e-mail: techserv@bendermedsystems.com
www.bendermedsystems.com

Cat.No. BMS249INST human TGF- β 1 INSTANT ELISA

16 Reagent Preparation Summary

16.1 Wash Buffer

Add **Wash Buffer Concentrate** 20 x (25 ml) to 475 ml distilled water

16.2 Assay Buffer

Add **Assay Buffer Concentrate** 20 x (5 ml) to 95 ml distilled water

17 Test Protocol Summary

- Predilute sample with Assay Buffer 1:10, pretreat sample with HCl and NaOH
- Place standard strips in position A1/A2 to H1/H2.
- Add 50 µl **distilled water** to sample wells.
- Add **distilled water**, in duplicate, to all standard and blank wells as indicated on the label of the standard strips.
- Add 100 µl **pretreated Sample** to designated wells.
- Cover microwell strips and incubate 4 hours at room temperature (18° to 25°C) on a microplate shaker at 100 rpm.
- Empty and wash microwell strips 3 times with 400 µl **Wash Buffer**.
- Add 100 µl of **TMB Substrate Solution** to all wells including blank wells.
- Incubate the microwell strips for about 10 minutes at room temperature (18° to 25°C).
- Add 100 µl **Stop Solution** to all wells including blank wells.
- Blank microwell reader and measure colour intensity at 450 nm.

Note: Samples have been diluted 1:12, thus the concentration read from the standard curve must be multiplied by the dilution factor (x 12).