

PRODUCT INFORMATION AND MANUAL

human IL-6 Instant ELISA

REF **BMS213INSTCE**

IVD

Enzyme-linked immunosorbent assay for quantitative
detection of human IL-6.

For in vitro diagnostic use.

Not for therapeutic procedures.

▽ 128 Tests

CE

**human IL-6
BMS213INSTCE**



Bender MedSystems GmbH
Campus Vienna Biocenter 2
A-1030 Vienna, Austria, Europe

TABLE OF CONTENTS

1	Intended Use	4
2	Summary	4
3	Principles of the Test	6
4	Reagents Provided	7
5	Storage Instructions	7
6	Specimen Collection	8
7	Materials Required But Not Provided	9
8	Precautions for Use	10
9	Preparation of Reagents and Samples	12
10	Test Protocol	13
11	Calculation of Results	17
12	Limitations	20
13	Performance Characteristics	21
14	Bibliography	26
15	Ordering Information	30
16	Reagent Preparation Summary	31
17	Test Protocol Summary	32
	PRODUKTINFORMATION UND HANDBUCH (Deutsch)	33
1	Mitgelieferte Reagenzien	33
2	Sicherheitsvorkehrungen für den Gebrauch	34
3	Lagerhinweise	35
4	Vorbereitung der Reagenzien	36
5	Testprotokoll	37
	INFORMACIÓN Y MANUAL DEL PRODUCTO (Español)	40
1	Reactivos Suministrados	40
2	Instrucciones de Conservación	41
3	Preparación de los Reactivos	42
4	Protocolo de Ensayo	43
	INFORMATIONS SUR LE PRODUIT ET MANUEL (Français)	46
1	Réactifs Fournis	46
2	Préparation des Réactifs	47

3	Protocolle de Test	48
	INFORMAZIONI SUL PRODOTTO E MANUALE (italiano)	51
1	Reagenti Forniti	51
2	Istruzioni di Conservazione	52
3	Preparazione Dei Reagenti	53
4	Procedura del Test	54

1 Intended Use

The human IL-6 Instant ELISA is an enzyme-linked immunosorbent assay for the quantitative detection of human Interleukin-6 in cell culture supernatants, human serum, plasma, urine, synovial fluid, amniotic fluid or other body fluids. The human IL-6 Instant ELISA is **for in vitro diagnostic use. Not for use in therapeutic procedures.**

2 Summary

Interleukin-6 (IL-6) is a multi-functional cytokine that regulates immune responses, acute phase reactions and hematopoiesis and may play a central role in host defense mechanisms (13, 31). The gene for human IL-6 has been localized to chromosome 7p21 (1). The genomic sequence has been determined (36). IL-6 is usually not produced constitutively by normal cells, but its expression is readily induced by a variety of cytokines (28), lipopolysaccharide (25) or viral infections (3). The IL-6 gene product is a single chain protein with a molecular mass ranging from 21 to 28 kDa, depending on the cellular source. Extensive posttranslational modifications like N- and O-linked glycosylation (20) as well as phosphorylation (21) seem to account for this heterogeneity. The cDNA for IL-6 predicts a precursor protein of 212 amino acids (10). IL-6 is a pleiotropic cytokine produced by a variety of cells. It acts on a wide range of tissues, exerting growth-induction, growth-inhibition, and differentiation respectively, depending on the nature of the target cells.

IL-6 is involved in

- the induction of B-cell differentiation,
- the induction of acute phase proteins in liver cells,
- growth promotion of myeloma/plasmacytoma/hybridoma cells,
- induction of IL-2 and IL-2 receptor expression,
- proliferation and differentiation of T cells,
- inhibition of cell growth of certain myeloid leukemic cell lines and induction of their differentiation to macrophages,
- enhancement of IL-3-induced multipotential colony cell formation in hematopoietic stem cells and induction of maturation of megakaryocytes as a thrombopoietic factor,
- induction of mesangial cell growth,
- induction of neural differentiation of PC 12 cells and
- induction of keratinocyte growth (14).

The abnormal production of IL-6 was first suggested to be related to polyclonal B-cell activation with autoantibody production in patients with cardiac myxoma (9). Since then, IL-6 has been suggested to be involved in the pathogenesis of a variety of diseases. Measurement of IL-6 levels in serum and other body fluids thus provides more detailed insights into various pathological situations.

Infections:

Body fluids of patients with acute local bacterial or viral infections and serum of patients with gram-negative or positive bacteremia contain elevated levels of biologically active IL-6 (7, 16).

Obstetric Infections:

IL-6 has emerged as a reporter cytokine for intraamniotic infection (29).

Diseases associated with an altered immune system (polyclonal B-cell abnormalities or autoimmune diseases):

Elevated levels of circulating IL-6 have been detected in patients with cardiac myxoma (11), Castleman's disease (18), rheumatoid arthritis (12), IgM gammopathy and in those with acquired immunodeficiency syndrome (19, 23) as well as alcoholic liver cirrhosis (2, 32).

Proliferative diseases:

Elevated plasma levels of IL-6 are observed in patients with psoriasis (4, 5) and mesangial proliferative glomerulonephritis (15).

Neoplastic Diseases:

Increased systemic levels of IL-6 have been detected in patients with multiple myeloma (22), other B-cell dyscrasias (27), Lennert's T lymphoma, Castleman's disease, renal cell carcinoma (33) and various other solid tumors (17, 30).

Inflammatory responses:

IL-6 is involved in the induction of acute phase proteins and induction of fever (8). Elevated serum levels of IL-6 are also found in patients with severe burns (24, 34), in serum and plasma as a marker for predicting postoperative complications (26), in serum and urine of recipients of kidney transplants before rejection (35), in the serum of septic shock patients (6) and in patients with inflammatory arthritis and traumatic arthritis.

3 Principles of the Test

An anti-human IL-6 monoclonal coating antibody is adsorbed onto microwells. Human IL-6 present in the sample or standard binds to antibodies adsorbed to the microwells; a biotin-conjugated monoclonal anti-human IL-6 antibody binds to human IL-6 captured by the first antibody. Streptavidin-HRP binds to the biotin conjugated anti-human IL-6.

Following incubation unbound biotin conjugated anti human IL-6 and Streptavidin-HRP is removed during a wash step, and substrate solution reactive with HRP is added to the wells.

A coloured product is formed in proportion to the amount of soluble human IL-6 present in the sample. The reaction is terminated by addition of acid and absorbance is measured at 450 nm. A standard curve is prepared from seven human IL-6 standard dilutions and human IL-6 sample concentration determined.

Figure 1

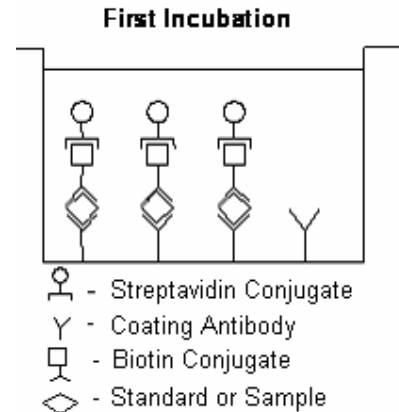


Figure 2

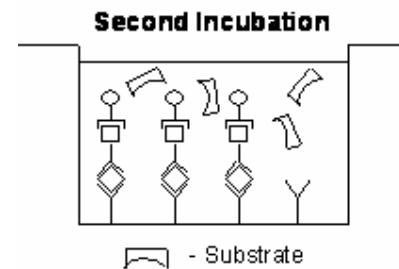
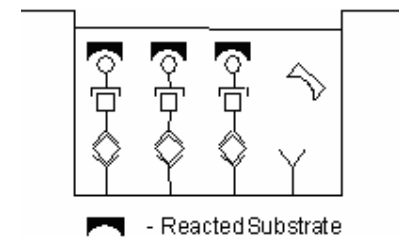


Figure 3



4 Reagents Provided

- 1 aluminium pouch with a **Microwell Plate coated with Monoclonal Antibody** (murine) to human IL-6, **Biotin-Conjugate** (anti-IL-6 monoclonal antibody), **Sample Diluent** and **Streptavidin-HRP**, lyophilized
- 2 aluminium pouches with a **human IL-6 Standard curve (coloured)**
- 1 bottle (25 ml) **Wash Buffer Concentrate 20x** (phosphate-buffered saline with 1% Tween 20)
- 1 vial (15 ml) **Substrate Solution** (tetramethyl-benzidine)
- 1 vial (12 ml) **Sample Diluent** (Use when an external predilution of the samples is needed)
- 1 vial (15 ml) **Stop Solution** (1M Phosphoric acid)
- 2 adhesive **Plate Covers**
- 1 vial **Control low**
- 1 vial **Control high**

5 Storage Instructions

Store ELISA plate, Standard curves and controls or whole kit at -20 °C. The plate, the standard curves and the controls can also be removed, stored at -20 °C, remaining kit reagents can be stored between 2 ° and 8 °C. Expiry of the kit and reagents is stated on labels.

The expiry of the kit components can only be guaranteed if the components are stored properly, and if, in case of repeated use of one component, the reagent is not contaminated by the first handling.

6 Specimen Collection

Cell culture supernatants, human serum, plasma, urine, synovial fluid, amniotic fluid or other body fluids are suitable for use in the assay. Remove the serum or plasma from the clot or red cells as soon as possible after clotting and separation.

Samples containing a visible precipitate must be clarified prior to use in the assay. Do not use grossly hemolyzed or lipemic specimens.

Samples must be stored frozen at -20°C to avoid loss of bioactive human IL-6. If samples are to be run within 24 hours, they may be stored at 2° to 8°C (for sample stability refer to 13).

Avoid repeated freeze-thaw cycles. Prior to assay, frozen serum or plasma should be brought to room temperature slowly and mixed gently.

7 Materials Required But Not Provided

- 5 ml and 10 ml graduated pipettes
- 5 μl to 1000 μl adjustable single channel micropipettes with disposable tips
- 50 μl to 300 μl adjustable multichannel micropipette with disposable tips
- Multichannel micropipette reservoir
- Beakers, flasks, cylinders necessary for preparation of reagents
- Device for delivery of wash solution (multichannel wash bottle or automatic wash system)
- Microwell strip reader capable of reading at 450 nm (620 nm as optional reference wave length)
- Glass-distilled or deionized water
- Statistical calculator with program to perform linear regression analysis

8 Precautions for Use

- All chemicals should be considered as potentially hazardous. We therefore recommend that this product is handled only by those persons who have been trained in laboratory techniques and that it is used in accordance with the principles of good laboratory practice. Wear suitable protective clothing such as laboratory overalls, safety glasses and gloves. Care should be taken to avoid contact with skin or eyes. In the case of contact with skin or eyes wash immediately with water. See material safety data sheet(s) and/or safety statements(s) for specific advice.
- Reagents are intended for in vitro diagnostic use and are not for use in therapeutic procedures.
- Do not mix or substitute reagents with those from other lots or other sources.
- Do not use kit reagents beyond expiration date on label.
- Do not expose kit reagents to strong light during storage or incubation.
- Do not pipette by mouth.
- Do not eat or smoke in areas where kit reagents or samples are handled.
- Avoid contact of skin or mucous membranes with kit reagents or specimens.
- Rubber or disposable latex gloves should be worn while handling kit reagents or specimens.
- Avoid contact of substrate solution with oxidizing agents and metal.
- Avoid splashing or generation of aerosols.
- In order to avoid microbial contamination or cross-contamination of reagents or specimens which may invalidate the test use disposable pipette tips and/or pipettes.
- Use clean, dedicated reagent trays for dispensing substrate reagent.

- Glass-distilled water or deionized water must be used for reagent preparation.
- Substrate solution must be at room temperature prior to use.
- Decontaminate and dispose specimens and all potentially contaminated materials as they could contain infectious agents. The preferred method of decontamination is autoclaving for a minimum of 1 hour at 121.5°C.
- Liquid wastes not containing acid and neutralized waste may be mixed with sodium hypochlorite in volumes such that the final mixture contains 1.0% sodium hypochlorite. Allow 30 minutes for effective decontamination. Liquid waste containing acid must be neutralized prior to the addition of sodium hypochlorite.

9 Preparation of Reagents and Samples

9.1 Wash Buffer

If crystals have formed in the Wash Buffer Concentrate, warm it gently until they have completely dissolved.

Pour entire contents (25 ml) of the Wash Buffer Concentrate into a clean 500 ml graduated cylinder. Bring to final volume to 500 ml with glass-distilled or deionized water. Mix gently to avoid foaming. The pH of the final solution should adjust to 7.4.

Transfer to a clean wash bottle and store at 2° to 25°C. Please note that Wash Buffer is stable for 30 days.

9.2 Controls

Solubilize by adding 300 µl distilled water to lyophilized controls. Swirl or mix gently to ensure complete and homogeneous solubilization. Further treat the controls like your samples in the assay. For control range please refer to certificate of analysis or vial label. Store reconstituted controls aliquoted at -20°C. Avoid repeated freeze and thaw cycles.

10 Test Protocol

- **Use plate immediately after removal from -20°C!**
 - **Do not wait until pellets have completely dissolved before applying samples - the binding reaction in the standard strips starts immediately after addition of water!**
 - **Do not try to dissolve pellets by pipetting up and down in the wells - some parts of the pellet could stick to the tip creating high variation of results**
 - **Perform the washing step with at least 400 µl of washing buffer as stated in the manual or fill the wells completely - otherwise any pellet residues sticking to the rim of the well will not be removed and create high variation of results**
 - **Allow the washing buffer to sit in the wells for a few seconds before aspiration**
 - **Remove covers of the standard strips carefully in order that all the lyophilised pellets remain in the wells**
- a. Determine the number of Microwell Strips required to test the desired number of samples plus Microwell Strips for blanks and standards (coloured). Each sample, standard, blank, and optional control sample should be assayed in duplicate. Remove extra Microwell Strips from holder and store in foil bag with the desiccant provided at -20°C sealed tightly. Place microwell strips containing the standard curve in position A1/A2 to H1/H2 (see Table 1).
 - b. Add 100 µl of distilled water to the sample wells.
 - c. Add distilled water to all standard and blank wells as indicated on the label of the standard strips (A1, A2 to H1, H2).

Table 1

Table depicting an example of the arrangement of blanks, standards and samples in the microwell strips:

	1	2	3	4
A	Standard 1 (100.00 pg/ml)	Standard 1 (100.00 pg/ml)	Sample 1	Sample 1
B	Standard 2 (50.00 pg/ml)	Standard 2 (50.00 pg/ml)	Sample 2	Sample 2
C	Standard 3 (25.00 pg/ml)	Standard 3 (25.00 pg/ml)	Sample 3	Sample 3
D	Standard 4 (12.50 pg/ml)	Standard 4 (12.50 pg/ml)	Sample 4	Sample 4
E	Standard 5 (6.25 pg/ml)	Standard 5 (6.25 pg/ml)	Sample 5	Sample 5
F	Standard 6 (3.13 pg/ml)	Standard 6 (3.13 pg/ml)	Sample 6	Sample 6
G	Standard 7 (1.56 pg/ml)	Standard 7 (1.56 pg/ml)	Sample 7	Sample 7
H	Blank	Blank	Sample 8	Sample 8

- d. Add 50 µl of each **Sample**, in duplicate, to the designated wells and mix the contents.
- e. Cover with a **Plate Cover** and incubate at room temperature (18°C to 25°C) for 3 hours, if available on a microplate shaker at 200 rpm.
- f. Remove **Plate Cover** and empty wells. Wash the microwell strips 3 times with approximately 400 µl Wash Buffer per well with thorough aspiration of microwell contents between washes. Take care not to scratch the surface of the microwells.

After the last wash, tap microwell strips on absorbent pad or paper towel to remove excess Wash Buffer. Use the microwell strips immediately after washing or place upside down on a wet absorbent paper for no longer than 15 minutes. Do not allow wells to dry.

- g. Pipette 100 µl of **TMB Substrate Solution** to all wells, including the blank wells.
- h. Incubate the microwell strips at room temperature (18° to 25°C) for about 10 minutes. Avoid direct exposure to intense light.

The colour development on the plate should be monitored and the substrate reaction stopped (see point i. of this protocol) before positive wells are no longer properly recordable.

It is recommended to add the stop solution when the highest standard has developed a dark blue colour.

Alternatively the colour development can be monitored by the ELISA reader at 620 nm. The substrate reaction should be stopped as soon as the standard 1 has reached an OD of 0.6 – 0.65.

- i. Stop the enzyme reaction by quickly pipetting 100 µl of **Stop Solution** into each well, including the blank wells. It is important that the Stop Solution is spread quickly and uniformly throughout the microwells to completely inactivate the enzyme. Results must be read immediately after the Stop Solution is added or within one hour if the microwell strips are stored at 2 - 8°C in the dark.
- j. Read absorbance of each microwell on a spectro-photometer using 450 nm as the primary wave length (optionally 620 nm as the reference wave length; 610 nm to 650 nm is acceptable). Blank the plate reader according to the manufacturer's instructions by using the

blank wells. Determine the absorbance of both the samples and the human IL-6 standards.

11 Calculation of Results

- Calculate the average absorbance values for each set of duplicate standards and samples. Duplicates should be within 20 per cent of the mean.
- Create a standard curve by plotting the mean absorbance for each standard concentration on the ordinate against the human IL-6 concentration on the abscissa. Draw a best fit curve through the points of the graph.
- To determine the concentration of circulating human IL-6 for each sample, first find the mean absorbance value on the ordinate and extend a horizontal line to the standard curve. At the point of intersection, extend a vertical line to the abscissa and read the corresponding human IL-6 concentration.
- ***Samples have been diluted 1:2, thus the concentration read from the standard curve must be multiplied by the dilution factor (x 2).**
- It is suggested that each testing facility establishes a control sample of known human IL-6 concentration and runs this additional control with each assay. If the values obtained are not within the expected range of the control, the assay results may be invalid.
- A representative standard curve is shown in Figure 4. This curve cannot be used to derive test results. Every laboratory must prepare a standard curve for each group of microwell strips assayed.

* N.B: There is a common dilution factor for samples due to the conjugate which must then be included in the calculation. The samples contribute 100 µl to the final volume per well. These 100 µl are composed of 50 µl of sample diluent plus 50 µl of the sample. This is a 1:2 dilution.

The remaining 50 µl to give 150 µl are due to the addition of 50 µl conjugate to all wells.

50 µl sample diluent and 50 µl conjugate results in 100 µl reconstitution volume, addition of 50 µl sample (50 µl + 50 µl = 1:2 dilution)

Figure 4

Representative standard curve for human IL-6 Instant ELISA. Human IL-6 was diluted in serial 2-fold steps in Sample Diluent, each symbol represents the mean of 3 parallel titrations.

Do not use this standard curve to derive test results. A standard curve must be run for each group of microwell strips assayed.

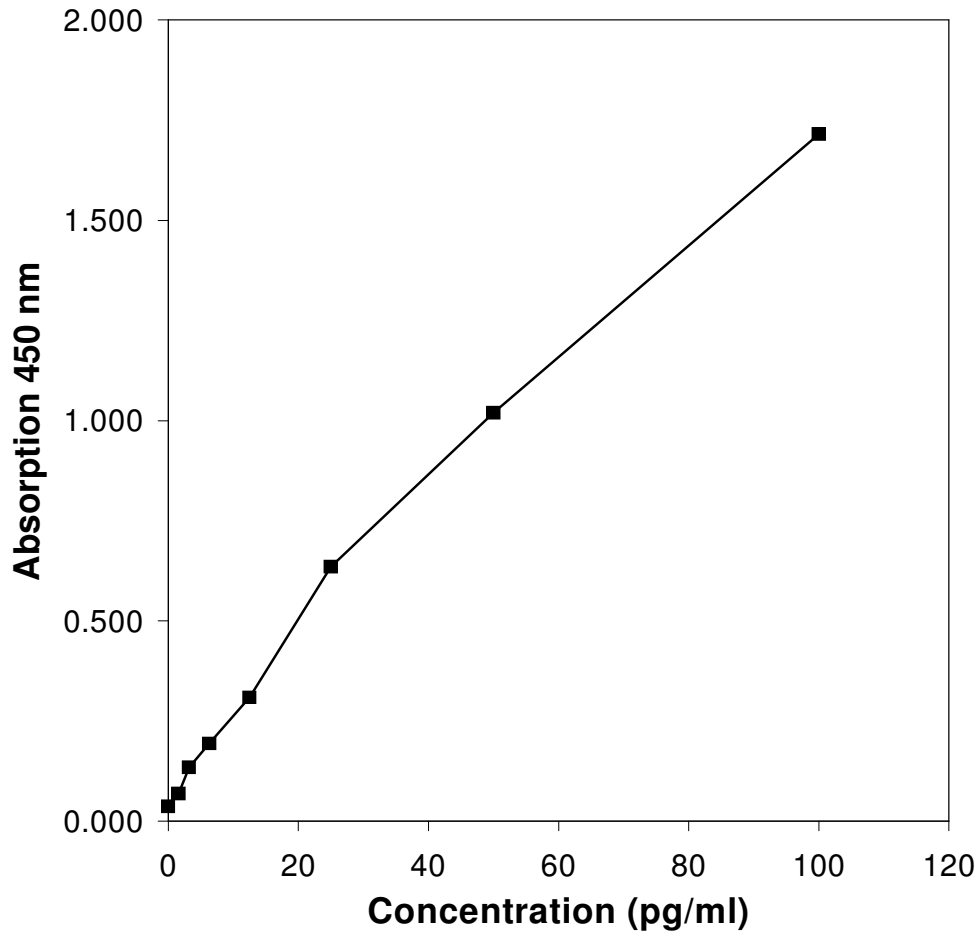


Table 2

Typical data using the human IL-6 INSTANT ELISA

Measuring wavelength: 450 nm

Reference wavelength: 620 nm

Standard	human IL-6 Concentration (pg/ml)	O.D. (450 nm)	O.D. Mean	C.V. (%)
1	100.00	1.708	1.715	5.2
	100.00	1.721		
2	50.00	1.058	1.019	3.6
	50.00	0.981		
3	25.00	0.625	0.635	2.2
	25.00	0.645		
4	12.50	0.313	0.309	5.1
	12.50	0.304		
5	6.25	0.205	0.194	8.2
	6.25	0.182		
6	3.13	0.136	0.134	6.4
	3.13	0.132		
7	1.56	0.073	0.069	6.8
	1.56	0.065		
Blank	0	0.041	0.037	
	0	0.033		

12 Limitations

- Since exact conditions may vary from assay to assay, a standard curve must be established for every run.
- Bacterial or fungal contamination of either screen samples or reagents or cross-contamination between reagents may cause erroneous results.
- Disposable pipette tips, flasks or glassware are preferred, reusable glassware must be washed and thoroughly rinsed of all detergents before use.
- Improper or insufficient washing at any stage of the procedure will result in either false positive or false negative results. Empty wells completely before dispensing fresh wash solution, fill with Wash Buffer as indicated for each wash cycle and do not allow wells to sit uncovered or dry for extended periods.
- The use of radioimmunotherapy has significantly increased the number of patients with human anti-mouse IgG antibodies (HAMA). HAMA may interfere with assays utilizing murine monoclonal antibodies leading to both false positive and false negative results. Serum samples containing antibodies to murine immunoglobulins can still be analysed in such assays when murine immunoglobulins (serum, ascitic fluid, or monoclonal antibodies of irrelevant specificity) are added to the Sample.

13 Performance Characteristics

13.1 Sensitivity

The limit of detection of human IL-6 defined as the analyte concentration resulting in an absorbance significantly higher than that of the dilution medium (mean plus 2 standard deviations) was determined to be 0.92 ng/ml (mean of 6 independent assays).

13.2 Reproducibility

13.2.1 Intra-assay

Reproducibility within the assay was evaluated in 3 independent experiments. Each assay was carried out with 6 replicates of 6 serum samples containing different concentrations of human IL-6. 2 standard curves were run on each plate. Data below show the mean human IL-6 concentration and the coefficient of variation for each sample (see Table 3). The calculated overall intra-assay coefficient of variation was 6.2%.

Table 3

The Mean human IL-6 concentration and the coefficient of variation for each sample.

Positive Sample	Experiment	human IL-6 Concentration (pg/ml)	Coefficient of Variation (%)
1	1	100.5	4
	2	111.4	8
	3	110.2	5
2	1	59.2	9
	2	53.6	7
	3	56.1	6
3	1	30.1	5
	2	28.3	5
	3	32.2	3
4	1	168.9	8
	2	166.6	6
	3	148.0	4
5	1	59.0	5
	2	52.5	8
	3	56.5	7
6	1	27.1	8
	2	23.1	7
	3	29.6	5

13.2.2 Inter-assay

Assay to assay reproducibility within one laboratory was evaluated in 3 independent experiments by 3 technicians. Each assay was carried out with 6 replicates of 6 serum samples containing different concentrations of human IL-6. 2 standard curves were run on each plate. Data below (see Table 4) show the mean human IL-6 concentration and the coefficient of variation calculated on 18 determinations of each sample. The calculated overall coefficient of variation was 7.0%.

Table 4

The mean human IL-6 concentration and the coefficient of variation calculated on 18 determinations of each sample.

Sample	human IL-6 Concentration (pg/ml)	Coefficient of Variation (%)
1	107.4	5.6
2	56.3	5.0
3	30.2	6.4
4	161.2	7.1
5	56.0	5.8
6	26.6	12.3

13.3 Spike Recovery

The spike recovery was evaluated by spiking 4 levels of human IL-6 into pooled normal human serum. Recoveries were determined in 3 independent experiments with 6 replicates each. The unspiked serum was used as blank in these experiments. Average recovery ranged from 77% to 110% with an overall mean recovery of 90%.

13.4 Dilution Parallelism

4 serum samples with different levels of human IL-6 were analysed at serial 2 fold dilutions with 4 replicates each. The recovery ranged between 100% to 118% with an overall mean recovery of 108% (see Table 5).

Table 5

Sample	Dilution	Human IL-6 Concentration (pg/ml)		% Recovery of Exp. Val.
		Expected Value	Observed Value	
1	1:2	--	665	--
	1:4	333	379	114
	1:8	166	179	108
2	1:2	--	343	--
	1:4	172	203	118
	1:8	86	86	100
3	1:2	--	657	--
	1:4	329	354	108
	1:8	164	175	106
4	1:2	--	339	--
	1:4	169	176	104
	1:8	85	92	109

13.5 Sample Stability

13.5.1 Freeze-Thaw Stability

Aliquots of serum samples (unspiked or spiked) were stored at -20°C and thawed 5 times, and the human IL-6 levels determined. There was no significant loss of human IL-6 immunoreactivity by freezing and thawing.

13.5.2 Storage Stability

Aliquots of serum samples (spiked or unspiked) were stored at -20°C, 2-8°C, room temperature (RT) and at 37°C, and the human IL-6 level determined after 24 h. There was no significant loss of human IL-6 immunoreactivity during storage under above conditions.

13.6 Comparison of Serum and Plasma

From two individuals, serum as well as EDTA and citrate, and heparin plasma obtained at the same time point were evaluated. Human IL-6 concentrations were not significantly different and therefore all these body fluids are suitable for the assay. It is nevertheless highly recommended to assure the uniformity of blood preparations.

13.7 Specificity

To define the specificity of this ELISA several proteins were tested for cross reactivity. There was no cross reactivity observed.

13.8 Expected Values

A panel of 22 randomly selected sera from apparently healthy blood donors (males and females) was tested for human IL-6. The detected human IL-6 levels ranged between less than 1.4 and 14.1 pg/ml with a mean level of 1.3 pg/ml and a standard deviation of ± 3.2 pg/ml. The normal levels measured may vary with the sample collective used.

13.9 Calibration

This immunoassay is calibrated with highly purified recombinant human IL-6, which has been evaluated against the International Reference Standard NIBSC 89/548 and has been shown to be equivalent. NIBSC 89/548 is quantitated in International Units (IU), 1IU corresponding to 10 pg IL-6.

14 Bibliography

- 1) Bowcock A. M., J. R. Kidd, M. Lathrop, L. Danshvar, L. May, A. Ray, P. B. Sehgal, K. K. Kidd, and L. L. Cavallisforza. (1988). The human "beta-2 interferon/hepatocyte stimulating factor interleukin-6" gene: DNA polymorphism studies and localization to chromosome 7p21. *Genomics* 3, 8-16.
- 2) Byl B., I. Roucloux, A. Crusiaux, E. Dupont, and J. Deviere. (1993). Tumor Necrosis Factor-alpha and Interleukin-6 plasma levels in infected cirrhotic patients. *Gastroenterology* 104, 1492-1497.
- 3) Cayphas S., J. Van Damme, A. Vink, R. J. Simpson, A. Billiau, and J. Van Snick. (1987). Identification of an interleukin HPI-like plasmacytoma growth factor produced by L cells in response to viral infection. *J. Immunol.* 139, 2965-2969.
- 4) Elder J. T., C. I. Sartor, D. K. Boman, S. Benrazavi, G. J. Fisher, and M. R. Pittelkow. (1992). Interleukin-6 in psoriasis-expression and mitogenicity studies. *Arch. Derm. Res.* 284, 324-332.
- 5) Grossman R. M., J. Krueger, D. Yourish, A. Granelli-Piperno, D. P., Murphy, L. T. May, T. S. Kupper, P. B. Sehgal, and A. B. Gottlieb. (1989). Interleukin 6 is expressed in high levels in psoriatic skin and stimulates proliferation of cultured human keratinocytes. *Proc. Nati. Acad. Sci. USA* 86, 6367.
- 6) Hack C. E., E. R. De Groot, R. J. F. Felt-Bersma, J. H. Nuijens, R. J. M. Strack van Schijndel, A. J. M. Eerenberg-Belmer, L. G. Thjojs, and L. A. Aarden. (1989). Increased plasma levels of interleukin 6 in sepsis. *Blood* 74, 1704.
- 7) Helfgott D. C., S. B. Tatter, U. Santhanam, R. H. Clarick, N. Bhardwaj, L. T. May, and P. B. Sehgal. (1989). Multiple forms of IFN-b2/IL-6 in serum and body fluids during acute bacterial infection. *J. Immunol.* 142, 948.
- 8) Helle M., J. P. J. Brakenhoff, E. R. De Groot, and L. A. Aarden. (1988). Interleukin 6 is involved in interleukin-1-induced activities. *Eur. J. Immunol.* 18, 957 ff

- 9) Hirano T., T. Taga, N. Nakano, K. Yasukawa, S. Kashiwamura, K. Shimizu, K. Nakajima, K. H. Pyun, and T. Kishimoto. (1985). Purification to homogeneity and characterization of human B-cell differentiation factor (BCDF or BSFp-2). *PNAS* 82, 5490-5494.
- 10) Hirano T., K. Yasukawa, H. Harada, T. Taga, Y. Watanabe, T. Matsuda, S.I. Kashiwamura, K. Nakajima, K. Koyama, A. Iwamatsu, S. Tsunasawa, F. Sakiyama, H. Matsui, Y. Takahara, T. Taniguchi, and T. Kishimoto. (1986). Complementary DNA for a novel human interleukin (BSF-2) that induces B lymphocytes to produce immunoglobulin. *Nature* 324, 73-76.
- 11) Hirano T., T. Taga, K. Yasukawa, K. Nakajima, N. Nakano, F. Takatsuki, M. Shimizu, A. Murashima, S. Tsunasawa, F. Sakiyama, and T. Kishimoto. (1987). Human B-cell differentiation factor defined by an anti-peptide antibody and its possible role in autoantibody production. *PNAS* 84, 228-231.
- 12) Hirano T., T. Matsuda, M. Turner, N. Miyasaka, G. Buchan, B. Tang, K. Sato, M. Shimizu, R. Maini, M. Feldmann, and T. Kishimoto. (1988). Excessive production of interleukin 6/B cell stimulatory factor-2 in rheumatoid arthritis. *Eur. J. Immunol.* 18, 1797-1801.
- 13) Hirano T., and T. Kishimoto. (1990). Interleukin-6. In: *Handbook of Experimental Pharmacology, Peptide Growth Factors and Their Receptors*, edited by M. B. Sporn, A. B. Roberts, Berlin, Springer-Verlag, pp 633-665.
- 14) Hirano T., A. Shizuo, T. Taga, and T. Kishimoto. (1990). Biological and clinical aspects of interleukin 6. *Immunology Today* 11, 443-449.
- 15) Horii Y., M. Iwano, E. Hirata, H. Shiiki, Y. Fujii, K. Dohi, and H. Ishikawa. (1993). Role of interleukin-6 in the progression of mesangial proliferative glomerulonephritis. *Kidney Intern.* 43, 71-75.
- 16) Houssiau F. A., K. Bukasa, C. J. M. Sindic, J. Van Damme, and J. Van Snick. (1988). Elevated levels of the 26k human hybridoma growth factor (interleukin 6) in cerebrospinal fluid of patients with acute infection of the central nervous system. *Clin. Exp. Immunol.* 71, 320ff.

- 17) Kishimoto T. (1989). The biology of interleukin-6. *Blood* 74, 1-10.
- 18) Kishimoto T., and T. Hirano. (1988). Molecular regulation of B lymphocyte response. *Ann. Rev. Immunol.* 6, 485-512.
- 19) O. Martinezmaza. (1992). IL-6 and AIDS. *Res. Immunol.* 143, 764-769.
- 20) May L. T., J. Grayeb, U. Santhanam, S. B. Tatter, Z. Stoecker, D. C. Helfgott, N. Chiorazzi, G. Grienering, and P. B. Sehgal. (1988). Synthesis and secretion of multiple forms of b2-interferon/B-cell differentiation factor 2 hepatocyte-stimulating factor by human fibroblasts and monocytes. *J. Biol. Chem.* 263, 7760-7766.
- 21) May L. T., U. Santhana, S. B. Tatter, D. C. Helfgott, A. Ray, J. Ghayeb, and P. B. Sehgal. (1988). Phosphorylation of secreted forms of human b2-interferon/hepatocyte-stimulating factor interleukin-6. *Biochem. Biophys. Res. Comm.* 152, 1144-1150.
- 22) Merico F., L. Bergui, M. G. Gregoretti, P. Ghia, G. Aimò, I. J. D. Lindley, and F. Caligariscaupio. (1993). Cytokines involved in the progression of multiple myeloma. *Clin. Exp. Immunol.* 92, 27-31.
- 23) Nakajima K., O. Martinez-Maza, T. Hirano, E. C. Breen, P. G. Nishanian, J. F. Salazar-Gonzalez, J. L. Fahey, and T. Kishimoto. (1989). Induction of IL-6 (B cell stimulatory factor-2/IFN-b2) production by HIV. *J. Immunol.* 142, 531ff.
- 24) Nijsten M. W. N., E. R. De Groot, H. J. Ten Duis, H. J. Klasen, C. E. Hack, and L. A. Aarden (1987). Serum levels of interleukin-6 and acute phase responses. *Lancet* II, 921ff.
- 25) Nordan R., and M. Potter. (1986). A macrophage-derived factor required by plasmacytomas for survival and proliferation in vitro. *Science* 233, 566-569.
- 26) Oka Y., A. Murata, J. Nishijima, T. Yasuda, N. Hiraoka, Y. Ohmachi, K. Kitagawa, T. Yasuda, H. Toda, N. Tanaka, and T. Mori. (1992). Circulating interleukin 6 as a useful marker for predicting postoperative complications. *Cytokine* 4, 298-304.
- 27) Pettersson T., K. Metsärinne, A. M. Teppo, and F. Fyhrquist. (1992). Immunoreactive interleukin-6 in serum of patients with B-lymphoproliferative diseases. *J. Int. Med.* 232, 439-442.

- 28) Ray A., S. B. Tatter, U. Santhanam, D. C. Helfgott, L. T. May, and P. B. Sehgal. (1989). Regulation of expression of interleukin-6: Molecular and clinical studies. *Ann. NY Acad. Sci.* 557, 353-362.
- 29) Santhanam U., C. Avila, R. Romero, H. Viguet, N. Ida, S. Sakurai, and P. B. Sehgal. (1991). Cytokines in normal and abnormal parturition: Elevated amniotic fluid interleukin-6 levels in women with premature rupture of membranes associated with intrauterine infection. *Cytokine* 3, 155-163.
- 30) Seguchi T., K. Yokokawa, H. Sugao, E. Nakano, T. Sonoda, and A. Okuyama. (1992). Interleukin-6 activity in urine and serum in patients with bladder carcinoma. *J. Urol.* 148, 791-794.
- 31) Sehgal P. B., G. Greininger, and G. Tosato. (1989). Regulation of the acute phase and immune responses: Interleukin-6. *Ann. NY Acad. Sci.* 557, 1-583.
- 32) Sheron N., G. Bird, J. Goka, G. Alexander, and R. Williams. (1991). Elevated plasma interleukin-6 and increased severity and mortality in alcoholic hepatitis. *Clin. Exp. Immunol.* 84, 449-453.
- 33) Tsukamoto T., Y. Kumamoto, N. Miyao, N. Masumori, A. Takahashi, and M. Yanase. (1992). Interlukin-6 in renal cell carcinoma. *J. Urol.* 148, 1778-1781.
- 34) Ueyama M., I. Maruyama, M. Osame, and Y. Sawada. (1992). Marked increase in plasma interleukin-6 in burn patients. *J. Lab. Clin. Med.* 120, 693-698.
- 35) Van Oers M. H. J., A. A. P. A. M. Van der Heyden, and L. A. Aarden. (1988). Interleukin-6 (IL-6) in serum and urine of renal transplant recipients. *Clin. Exp. Immunol.* 71, 314ff.
- 36) Zilberstein A., R. Ruggieri, J. H. Korn, and M. Revel. (1986). Structure and expression of cDNA and genes for human interferon- β 2, a distinct species inducible by growth-stimulatory cytokines. *EMBO J.* 5, 2529-2537.

For literature update refer to www.bendermedsystems.com/44.html

15 Ordering Information

For orders please contact:

Europe-Headquarters

Bender MedSystems GmbH
Campus Vienna Biocenter 2
A-1030 Vienna, Austria, Europe
phone: +43 1 796 40 40 ext. 114
fax: +43 1 796 40 40 ext. 400
e-mail: order@bendermedsystems.com

USA

Bender MedSystems, Inc.
849 Hinckley Road
Burlingame, CA 94010, USA
toll-free phone: +1 (866) 952 2112
toll-free fax: +1 (877) 952 2112
phone: +1 (650) 952 2112
fax: +1 (650) 952 2252

For technical information please contact:

e-mail: techserv@bendermedsystems.com
www.bendermedsystems.com

Cat.No. BMS213INSTCE human IL-6 INSTANT ELISA

16 Reagent Preparation Summary

16.1 Wash Buffer

Add **Wash Buffer Concentrate** 20 x (25 ml) to 475 ml distilled water

16.2 Controls

Solubilize by adding 300 μ l distilled water to lyophilized control.

17 Test Protocol Summary

- Place standard strips in position A1/A2 to H1/H2.
- Add 100 µl **distilled water** to sample wells.
- Add **distilled water**, in duplicate, to all standard and blank wells as indicated on the label of the standard strips.
- Add 50 µl **Sample** to designated wells.
- Cover microwell strips and incubate 3 hours at room temperature (18° to 25°C) if available on a microplate shaker at 200 rpm.
- Empty and wash microwell strips 3 times with 400 µl **Wash Buffer**.
- Add 100 µl of **TMB Substrate Solution** to all wells including blank wells.
- Incubate the microwell strips for about 10 minutes at room temperature (18° to 25°C).
- Add 100 µl **Stop Solution** to all wells including blank wells.
- Blank microwell reader and measure colour intensity at 450 nm.

Note: Samples have been diluted 1:2, thus the concentration read from the standard curve must be multiplied by the dilution factor (x 2).

PRODUKTINFORMATION UND HANDBUCH (Deutsch)

1 Mitgelieferte Reagenzien

- 1 Aluminiumbeutel mit Mikrotiterplatte, beschichtet mit monoklonalem Antikörper (von der Maus) gegen humanes IL-6, HRP-Konjugat (monoklonaler Anti-IL-6 Antikörper von der Maus) und Verdünnungslösung, lyophilisiert.
- 2 Aluminiumbeutel mit einer human IL-6-Standardkurve (farbig)
- 1 Flasche (25 ml) Waschpufferkonzentrat 20x (PBS mit 1% Tween 20)
- 1 Fläschchen (15 ml) Substratlösung (Tetramethylbenzidin)
- 1 Fläschchen (12 ml) Verdünnungslösung (Verwendung zur Vorverdünnung von Proben)
- 1 Fläschchen (15 ml) Stopplösung (1 M Phosphorsäure)
- 1 Fläschchen lyophilisierte Kontrolle
- 2 Klebefolien
- 1 Fläschchen Kontrolle niedrig
- 1 Fläschchen Kontrolle hoch

2 Sicherheitsvorkehrungen für den Gebrauch

- Alle enthaltenen Reagenzien sollten als potenziell gefährlich betrachtet werden. Daher wird empfohlen, dass dieses Produkt nur von Personen mit labortechnischer Erfahrung und in Übereinstimmung mit GLP Richtlinien verwendet wird. Passende Schutzbekleidung, wie Labormäntel, Sicherheitsbrillen und Laborhandschuhe müssen getragen werden. Vermeiden Sie jeden Kontakt der Reagenzien mit Haut oder Augen. Im Falle des Kontaktes von Reagenzien mit Haut oder Augen, sofort mit Wasser spülen. Bitte entnehmen Sie weitere spezifische Hinweise den Sicherheitsdatenblättern und/oder den Sicherheitsbestimmungen.
- Die Reagenzien sind ausschließlich für Diagnosezwecke bestimmt und nicht für den Einsatz bei Therapien.
- Reagenzien aus verschiedenen Chargen oder anderer Herkunft nicht mischen oder untereinander austauschen.
- Verwenden Sie die Kitreagenzien nicht nach dem Ablaufdatum (siehe Etikett).
- Setzen Sie die Kitreagenzien während der Lagerung oder Inkubation keiner starken Lichteinstrahlung aus.
- Nicht mit dem Mund pipettieren.
- In Bereichen, in denen mit Kitreagenzien oder Proben hantiert wird, nicht essen, trinken oder rauchen.
- Vermeiden Sie den Kontakt der Haut/Schleimhäute mit Kitreagenzien/Proben.
- Tragen Sie während des Hantierens mit Kitreagenzien oder Proben geeignete Gummi- oder Einweghandschuhe.
- Vermeiden Sie den Kontakt zwischen Substratlösung und Oxidationsmitteln/Metallen.
- Vermeiden Sie Spritzer oder Bildung von Aerosolen.
- Zur Vermeidung von Kontamination mit Mikroben oder Kreuzkontamination der Reagenzien oder Proben, die den Test

ungültig machen könnten, verwenden Sie Einwegpipettenspitzen und/oder Einwegpipetten.

- Verwenden Sie saubere, geeignete Reagenzgefäße für das Dispensieren von Konjugat und Substratreagenzien.
- Säureeinwirkung inaktiviert das Konjugat.
- Für die Reagenzherstellung muss destilliertes oder entionisiertes Wasser verwendet werden.
- Die Substratlösung muss vor der Verwendung auf Raumtemperatur gebracht werden.
- Dekontaminieren und entsorgen Sie Proben sowie alle möglicherweise kontaminierten Materialien so, als ob sie Infektionserreger enthalten könnten. Die bevorzugte Dekontaminationsmethode ist Autoklavieren für mind. eine Stunde bei 121,5°C.
- Flüssige Abfälle, die kein Säure enthalten, sowie neutralisierte Abfälle werden zur Dekontamination mit Natrium Hypochlorit versetzt (Endkonzentration von Natrium Hypochlorit 1.0%). Nach 30 min ist eine effektive Dekontamination erreicht. Flüssige Abfälle, die Säure enthalten, müssen vor der Dekontamination neutralisiert werden.

3 Lagerhinweise

Lagern Sie die ELISA Platte, Standardkurven und Kontrollen oder den ganzen Kit bei –20 °C. Die Platte, Standardkurven und Kontrollen können auch herausgenommen und bei –20 °C gelagert werden, die verbleibenden Reagenzien können bei 2-8 °C gelagert werden. Das Ablaufdatum des Kits und der Reagenzien ist auf den Etiketten angegeben.

Haltbarkeit des Kits und der Komponenten kann nur bei sachgemäßer Lagerung garantiert werden, sowie bei mehrfacher Verwendung nur dann, wenn die Reagenzien bei der ersten Verwendung nicht kontaminiert wurden.

4 Vorbereitung der Reagenzien

4.1 Waschpuffer

Sollten sich im Waschpufferkonzentrat Kristalle gebildet haben, erwärmen Sie es vorsichtig bis zur vollständigen Auflösung der Kristalle.

Leeren Sie den gesamten Inhalt (25 ml) des Waschpufferkonzentrats in einen sauberen 500-ml-Messzylinder. Füllen Sie mit destilliertem oder entionisiertem Wasser auf, bis ein Endvolumen von 500 ml erreicht ist. Vorsichtig mischen, um Schäumen zu vermeiden. Der pH-Wert der Endlösung sollte bei 7,4 liegen.

In eine saubere Waschflasche umfüllen und bei 2° bis 25 °C lagern. Bitte beachten Sie, dass der Waschpuffer 30 Tage haltbar ist.

4.2 Kontrollen

Lösen Sie die Kontrollen durch Zugabe von 300 µl destilliertem Wasser auf. Mixen oder schütteln Sie das Fläschchen vorsichtig um eine vollständige Lösung zu erreichen. Verfahren Sie in der Folge mit der Kontrolle analog zu den Proben. Der Kontrollbereich ist am Analysenzertifikat oder am Flaschenetikett angegeben. Lagern Sie die Kontrollen aliquotiert bei -20 °C. Vermeiden Sie wiederholtes Frieren und Tauen.

5 Testprotokoll

- **Verwenden Sie die Platte sofort nach Entnahme von -20°C!**
 - **Warten Sie mit dem Auftragen der Proben nicht bis zur vollständigen Auflösung der Lyophilisate – die Bindereaktion in den Standardstreifen beginnt sofort nach Beigabe von Wasser!**
 - **Versuchen Sie nicht, die Lyophilisate mittels Auf- und Abpipettieren in den Vertiefungen aufzulösen – Teile des Lyophilisats könnten dabei an der Spitze hängen bleiben und starke Abweichungen der Ergebnisse bewirken.**
 - **Führen Sie den Waschschrift mit mind. 400 µl Waschpuffer durch wie in der Anleitung beschrieben, oder füllen Sie die Vertiefungen vollständig – andernfalls werden allfällige Lyophilisatrückstände am Rand der Vertiefung nicht entfernt und bewirken starke Abweichungen der Ergebnisse.**
 - **Entfernen Sie die Abdeckungen der Standardstreifen vorsichtig, sodass alle Lyophilisate in den Vertiefungen bleiben.**
- a. Bestimmen Sie die Anzahl der **Mikrowellstreifen** die für das Testen der gewünschten Anzahl von Proben benötigt werden sowie die **Mikrowellstreifen** für Blindproben und Standards (**farbig**). Probe, Standard, Blindprobe und optionale Kontrollprobe immer jeweils doppelt testen. Entfernen Sie die zusätzlichen **Mikrowellstreifen** von der Halterung und bewahren Sie diese mit dem mitgelieferten Trockenmittel in dem Folienbeutel fest verschlossen bei -20°C auf. Bringen Sie die Mikrowellstreifen mit der Standardkurve in Position A1/A2 bis H1/H2 (siehe Table 6).
- b. Pipettieren Sie in alle Probenvertiefungen 100 µl destilliertes Wasser.
- c. Pipettieren Sie destilliertes Wasser in alle Standardvertiefungen und Blindprobenvertiefungen wie auf dem Etikett der Standardstreifen angegeben (A1, A2 bis H1, H2).

Table 6

Diagramm mit Beispiel für die Anordnung von Blindproben, Standards und Proben in den Mikrowellstreifen:

	1	2	3	4
A	Standard 1 (100.00 pg/ml)	Standard 1 (100.00 pg/ml)	Probe 1	Probe 1
B	Standard 2 (50.00 pg/ml)	Standard 2 (50.00 pg/ml)	Probe 2	Probe 2
C	Standard 3 (25.00 pg/ml)	Standard 3 (25.00 pg/ml)	Probe 3	Probe 3
D	Standard 4 (12.50 pg/ml)	Standard 4 (12.50 pg/ml)	Probe 4	Probe 4
E	Standard 5 (6.25 pg/ml)	Standard 5 (6.25 pg/ml)	Probe 5	Probe 5
F	Standard 6 (3.13 pg/ml)	Standard 6 (3.13 pg/ml)	Probe 6	Probe 6
G	Standard 7 (1.56 pg/ml)	Standard 7 (1.56 pg/ml)	Probe 7	Probe 7
H	Blindprobe	Blindprobe	Probe 8	Probe 8

- d. Pipettieren Sie je **50 µl von jeder Probe** (Doppelbestimmung) in die Probenvertiefungen und mischen Sie den Inhalt durch.
- e. Mit einer **Klebefolie** abdecken und bei Raumtemperatur (18° bis 25°C) für 3 Stunden inkubieren, wenn möglich auf einem Schüttler bei 200 U/min.
- f. Entfernen Sie die **Klebefolie** und entleeren Sie die Vertiefungen
Waschen Sie die Mikrowellstreifen 3 mal mit ca. **400 µl Waschpuffer** pro Vertiefung; zwischen den Waschgängen den Inhalt der Vertiefungen gründlich absaugen. Achten Sie darauf, die Oberfläche der Vertiefungen nicht zu zerkratzen.

- g. Leeren Sie die Vertiefungen nach dem letzten Waschschrift und klopfen Sie die Mikrowellstreifen auf einem Saug- oder Papiertuch aus, um überschüssigen Waschpuffer zu entfernen. Verwenden Sie die Mikrowellstreifen sofort nach dem Waschen, oder legen Sie diese für maximal 15 Minuten umgedreht auf ein nasses Saugtuch. Lassen Sie die Vertiefungen nicht austrocknen
- h. Pipettieren Sie in alle Vertiefungen, einschließlich der Blindprobenvertiefungen, 100 µl **TMB-Substratlösung**.
- i. Inkubieren Sie die Mikrowellstreifen bei Raumtemperatur (18° bis 25 °C) für ca. 10 Minuten. Vermeiden Sie direkte, starke Lichteinstrahlung. Die Farbentwicklung innerhalb der einzelnen Vertiefungen muss beobachtet und die Substratreaktion gestoppt werden, bevor die gefärbten wells nicht mehr richtig gemessen können. Es wird empfohlen, die Stopplösung zuzugeben, wenn der höchste Standardpunkt eine dunkelblaue Farbe angenommen hat. Alternativ kann die Farbentwicklung auch mit einem Photometer bei 620 nm verfolgt werden. Die Substratreaktion sollte gestoppt werden, wenn der höchste Standardpunkt eine OD von 0,6-0,65 erreicht.
- j. Stoppen Sie die Enzymreaktion durch rasches Pipettieren von 100 µl Stopplösung in jede Vertiefung, einschließlich der Blindprobenvertiefungen. Für eine vollständige Inaktivierung der Enzyme ist es wichtig, die Stopplösung rasch und gleichmäßig in die Vertiefungen zu verteilen. Die OD Werte müssen sofort nach Beigabe der Stopplösung oder innerhalb einer Stunde nach Lagerung der Mikrowellstreifen in Dunkelheit bei 2-8 °C gemessen werden.
- k. Messen Sie die Absorption jeder Vertiefung mit einem Spektrophotometer, verwenden Sie dabei 450 nm als primäre Wellenlänge (optional 620 nm als Referenzwellenlänge; 610 nm bis 650 nm sind möglich). Stellen Sie das Plattenmessgerät nach Anleitung des Herstellers und unter Verwendung der Blindprobenvertiefungen auf den Leerwert ein Bestimmen Sie die Absorption der Proben wie auch der human IL-6-Standards.

INFORMACIÓN Y MANUAL DEL PRODUCTO (Español)

1 Reactivos Suministrados

- 1 bolsa de aluminio con una placa de pocillos recubiertos con anticuerpos monoclonales (murinos) anti-IL-6 humano, diluyente para muestras y conjugado HRP [anticuerpos (murinos) monoclonales anti-IL-6], liofilizado
- 2 bolsas de aluminio con una curva de valoración human IL-6 (en color)
- 1 frasco (25 ml) de concentrado de tampón de lavado 20x (PBS con Tween 20 al 1%)*
- 1 vial (15 ml) de solución de sustrato (tetrametil-bencidina)
- 1 vial (12 ml) de diluyente de muestras
- 1 vial (15 ml) de solución de parada (ácido fosfórico 1M)
- 2 tapas para placas, adhesives
- 1 vial de control bajo
- 1 vial de control alto

2 Instrucciones de Conservación

Conservar la placa de ELISA o el kit completo a -20° C. También se puede sacar la placa para conservarla a -20° C y conservar los demás reactivos del kit a una temperatura comprendida entre 2 y 8° C. En las etiquetas figuran las fechas de caducidad del kit y de los reactivos. Sólo se podrá garantizar la fecha de caducidad de los componentes del *kit* si se conservan adecuadamente y, en caso de uso reiterado de un mismo componente, si el reactivo no queda contaminado en la primera manipulación.

3 Preparación de los Reactivos

3.1 Tampón de lavado

Si en el concentrado de tampón de lavado se han formado cristales, caliente suavemente hasta su completa disolución.

Vierta todo el contenido (25 ml) del Concentrado de tampón de lavado en un matraz aforado de 500 ml limpio. Enrase en matraz con agua destilada o desionizada. Mezcle suavemente para evitar la formación de espuma. Ajuste el pH de la solución final a 7,4.

Transfiera la solución a un frasco de lavado limpio y consérvela a una temperatura entre 2 °C y 25 °C. El Tampón de lavado permanece estable durante 30 días.

3.2 Control

Solubilizar añadiendo 300 µl de agua destilada al control liofilizado. Vortear concienzudamente para asegurar una solubilización homogénea y completa. A partir de aquí, tratar el control de la misma forma que las muestras. El rango del control viene indicado en el certificado de calidad y en la etiqueta del vial.

4 Protocolo de Ensayo

- **Utilice la placa inmediatamente después de extraerla del congelador a -20 °C**
 - **Al aplicar las muestras, no espere a la disolución total de las microcápsulas ya que la reacción de unión a las tiras de patrón se inicia inmediatamente después de añadir el agua.**
 - **No intente disolver las microcápsulas pipeteando por los pocillos ya que algunas partes de las microcápsulas podrían quedar adheridas a la punta y alterar considerablemente los resultados**
 - **En la etapa de lavado, emplee al menos 400 µl de tampón de lavado como se indica en el manual o llene los pocillos totalmente ya que, de lo contrario, podrían quedar restos de microcápsulas en los bordes de los pocillos que alterarían considerablemente los resultados**
 - **Retire las tapas de las tiras de patrón con cuidado para que todas las microcápsulas liofilizadas permanezcan en los pocillos**
- a. Determine el número de tiras necesarias para analizar el número deseado de muestras y además añada las **tiras** para blancos y patrones (**de color**). Todas las muestras, patrones, blancos y las posibles muestras de control deben ser analizadas por duplicado. Retire del soporte las **tiras** sobrantes y consérvelas, junto con el desecante suministrado en una bolsa metalizada y cerrada herméticamente, a una temperatura de -20° C. Coloque las tiras que contienen la curva de valoración en las posiciones A1/A2 a H1/H2 (véase la Table 7).
 - b. Añada 100 µl de agua destilada a los pocillos con muestras.
 - c. Añada agua destilada a los pocillos del patrón y del blanco como se indica en la etiqueta de las tiras de patrón (A1, A2 a H1, H2).
 - d. Por duplicado, añada 50 µl de cada **muestra** a los pocillos designados y mezcle los contenidos.

Table 7

	1	2	3	4
A	Patrón 1 (100.00 pg/ml)	Patrón 1 (100.00 pg/ml)	Muestra 1	Muestra 1
B	Patrón 2 (50.00 pg/ml)	Patrón 2 (50.00 pg/ml)	Muestra 2	Muestra 2
C	Patrón 3 (25.00 pg/ml)	Patrón 3 (25.00 pg/ml)	Muestra 3	Muestra 3
D	Patrón 4 (12.50 pg/ml)	Patrón 4 (12.50 pg/ml)	Muestra 4	Muestra 4
E	Patrón 5 (6.25 pg/ml)	Patrón 5 (6.25 pg/ml)	Muestra 5	Muestra 5
F	Patrón 6 (3.13 pg/ml)	Patrón 6 (3.13 pg/ml)	Muestra 6	Muestra 6
G	Patrón 7 (1.56 pg/ml)	Patrón 7 (1.56 pg/ml)	Muestra 7	Muestra 7
H	blanco	blanco	Muestra 8	Muestra 8

- e. Cubra la **placa con una tapa** e incúbela a temperatura ambiente (18°C - 25°C) durante 3 horas (en un agitador mecánico a 200 rpm, si es posible).
- f. Retire la **tapa** y vacíe los pocillos. Lave 3 veces las tiras con aproximadamente 400 µl de tampón de lavado por cada pocillo, aspirando completamente el contenido de los pocillos entre cada lavado. Evite rayar la superficie de los pocillos.
- g. Tras el último lavado, golpee suavemente las tiras contra un papel absorbente o una toallita de papel para eliminar el exceso de tampón de lavado. Utilice las tiras inmediatamente después de lavadas o bien colóquelas boca abajo sobre un papel absorbente húmedo durante como máximo 15 minutos. No deje secar los pocillos.

- h. Pipetee 100 μ l de **solución de sustrato TMB** y viértalos en todos los pocillos, incluidos los del blanco.
- i. Incube las tiras a temperatura ambiente (18 °C - 25 °C) durante aproximadamente 10 minutos. Evite la exposición directa a la luz intensa. **Deben monitorizarse los valores DO de la placa para detener la reacción del sustrato antes de que deje de ser posible registrar correctamente los pocillos positivos.** Se recomienda añadir la solución de parada cuando el estándar más alto presente un color azul oscuro. Alternativamente el desarrollo de color puede ser monitorizado con un lector de placas de ELISA a 620 nm. La reacción del sustrato debería ser parada cuando este estándar alcance una OD entre 0.6 y 0.65.
- j. Detenga la reacción enzimática pipeteando rápidamente 100 μ l de **solución de parada** en cada pocillo, incluidos los del blanco. Es importante dispensar la solución de parada de forma rápida y uniforme en todos los pocillos para inactivar totalmente la enzima. Los resultados deben leerse inmediatamente después de añadir la solución de parada o, como máximo, en el plazo de 1 hora si las tiras se conservan a una temperatura entre 2 - 8 °C en un lugar oscuro.
- k. Lea la absorbancia de cada pocillo en un espectrofotómetro utilizando 450 nm como longitud de onda principal (opcionalmente 620 nm como longitud de onda de referencia; los valores comprendidos entre 610 nm y 650 nm son aceptables). Utilizando los pocillos de blanco, haga el blanco del lector de placas de acuerdo con las instrucciones del fabricante. Determine la absorbancia de las muestras y de los patrones human IL-6.

INFORMATIONS SUR LE PRODUIT ET MANUEL (Français)

1 Réactifs Fournis

- 1 pochette en aluminium contenant une plaque de microtitration recouverte d'anticorps monoclonaux (murins) anti-IL-6 humaine, un diluant d'échantillon et le conjugué HRP (anticorps monoclonaux murins anti-IL-6), lyophilisés
- 2 pochettes en aluminium contenant une courbe étalon human IL-6 (colorée)
- 1 flacon (25 ml) de tampon de lavage concentré 20 x (tampon phosphate avec du Tween 20 1%)
- 1 flacon (15 ml) de solution de substrat (tétraméthyle-benzidine)
- 1 flacon (12 ml) de diluant d'échantillon
- 2 flacon (15 ml) de solution d'arrêt (acide phosphorique 1 M)
- 2 Couvre-plaques adhésifs
- 1 flacon de contrôle bas
- 1 flacon de contrôle haut

2 Préparation des Réactifs

2.1 Tampon de lavage

Si des cristaux se sont formés dans le concentré de Tampon de lavage, chauffer doucement ce dernier jusqu'à leur dissolution totale.

Verser tout le contenu (25 ml) du Concentré de Tampon de lavage dans un cylindre gradué propre de 500 ml. Porter le volume final à 500 ml avec de l'eau distillée dans un alambic en verre ou désionisée.

Mélanger doucement pour éviter la formation de mousse. Le pH de la solution finale doit être de 7.4.

Transférer le tout dans une bouteille de lavage et conserver à une température comprise entre 2° et 25°C. Noter que le Tampon de lavage reste stable pendant 30 jours.

2.2 Contrôle

Solubiliser en ajoutant 300 µl d'eau distillée au contrôle lyophilisé. Agiter doucement jusqu'à complète et homogène dissolution. Traiter ensuite le contrôle comme les échantillons dans le test. Pour la gamme étalon vous référer au certificat d'analyse ou l'étiquette de l'ampoule.

3 Protocole de Test

- **Utiliser la plaque immédiatement après son retrait d'un environnement à -20 °C !**
 - **Ne pas attendre que les pastilles soient complètement dissoutes pour appliquer les échantillons. La réaction de liaison dans les barrettes étalons commence immédiatement après l'ajout d'eau !**
 - **Ne pas essayer de dissoudre les pastilles en pipetant de haut en bas dans les puits. Certains fragments des pastilles pourraient se coller à l'embout et induire une forte variation des résultats.**
 - **Procéder à l'étape de lavage avec au moins 400 µl de tampon de lavage comme indiqué dans le manuel ou remplir complètement les puits. Dans le cas contraire, tous les résidus de pastilles collés au bord du puits ne seraient pas éliminés et entraîneraient une forte variation des résultats**
 - **Retirer délicatement les couvre-plaques des barrettes étalons de manière à ce que toutes les pastilles lyophilisées restent dans les puits**
- a. Déterminer le nombre de barrettes de puits de microtitration nécessaires pour tester le nombre voulu d'échantillons plus les **barrettes** nécessaires aux blancs et aux étalons (**colorés**). Chaque échantillon, étalon, blanc et contrôle (facultatif) doit être testé en double. Retirer les **barrettes de microtitration** inutiles du support et les stocker à -20°C dans une pochette hermétiquement refermée, avec le dessiccatif fourni. Placer les barrettes de puits de microtitration contenant la courbe étalon en position A1/A2 à H1/H2 (voir la Table 8).
- b. Ajouter 100 µl d'eau distillée dans les puits d'échantillon.
- c. Ajouter de l'eau distillée comme indiqué sur l'étiquette à tous les puits de standard et "blank" (A1, A2 à H1, H2)

Table 8

	1	2	3	4
A	Étalon 1 (100.00 pg/ml)	Étalon 1 (100.00 pg/ml)	Échantillon 1	Échantillon 1
B	Étalon 2 (50.00 pg/ml)	Étalon 2 (50.00 pg/ml)	Échantillon 2	Échantillon 2
C	Étalon 3 (25.00 pg/ml)	Étalon 3 (25.00 pg/ml)	Échantillon 3	Échantillon 3
D	Étalon 4 (12.50 pg/ml)	Étalon 4 (12.50 pg/ml)	Échantillon 4	Échantillon 4
E	Étalon 5 (6.25 pg/ml)	Étalon 5 (6.25 pg/ml)	Échantillon 5	Échantillon 5
F	Étalon 6 (3.13 pg/ml)	Étalon 6 (3.13 pg/ml)	Échantillon 6	Échantillon 6
G	Étalon 7 (1.56 pg/ml)	Étalon 7 (1.56 pg/ml)	Échantillon 7	Échantillon 7
H	Blind Échantillon	Blind Échantillon	Échantillon 8	Échantillon 8

- d. Ajouter 50 µl de chaque **échantillon**, en double, dans les puits assignés et mélanger le contenu.
- e. Recouvrir avec un **couvre-plaque** et incuber à température ambiante (entre 18 et 25 °C) pendant 3 heures, si possible sur un agitateur rotateur réglé à 200 tr/min.
- f. Retirer le **couvre-plaque** et vider les puits. Laver 3 fois les barrettes de puits de microtitration avec environ 400 µl de tampon de lavage pour chaque puits, en aspirant complètement le contenu des puits entre les lavages. Veiller à ne pas rayer la surface des puits de microtitration.
- g. Après le dernier lavage, vider les barrettes de puits et les tapoter sur un tampon absorbant ou une serviette en papier pour éliminer l'excès

de tampon de lavage. Utiliser les barrettes de micropuits immédiatement après le lavage ou les placer renversées sur un papier absorbant pendant 15 minutes au maximum. Ne pas laisser sécher les puits.

- h. Pipeter 100 μ l de **solution de substrat TMB** dans chaque puits, y compris les puits de blanc.
- g. Incuber les puits de microtitration à température ambiante (entre 18 et 25 C) pendant environ 10 minutes. Éviter toute exposition directe à une source de lumière intense.

Les valeurs de densité optique au niveau de la plaque doivent être surveillées et la réaction du substrat stoppée avant que les puits positifs ne soient plus correctement mesurables.

- i. Il est recommandé d'ajouter la solution stop quand une couleur bleu sombre s'est développée dans le point le plus haut de la gamme standard. Une autre alternative consiste à suivre le développement de la couleur en lecteur ELISA à 620 nm. La réaction du substrat doit être arrêtée dès que la DO atteint 0.6 à 0.65
- j. Arrêter la réaction enzymatique en pipetant rapidement 100 μ l de **solution d'arrêt** dans chaque puits, y compris les puits de blanc. Il est important que la solution d'arrêt soit répandue rapidement et uniformément dans les puits pour inactiver complètement l'enzyme. Les résultats doivent être lus immédiatement après l'ajout de la solution d'arrêt ou dans l'heure qui suit si les barrettes de microtitration sont conservées à l'obscurité entre 2 et 8 °C.
- k. Lire l'absorbance de chaque puits sur un spectrophotomètre avec 450 nm comme longueur d'onde primaire (éventuellement 620 nm comme longueur d'onde de référence; 610 à 650 nm sont acceptables). Mesurer le blanc du lecteur de plaque conformément aux instructions du fabricant, en utilisant les puits de blanc. Déterminer l'absorbance des échantillons et des étalons human IL-6.

INFORMAZIONI SUL PRODOTTO E MANUALE (italiano)

1 Reagenti Forniti

- 1 bustina di alluminio contenente una piastra micropozzetti rivestita con anticorpo monoclonale (murino) anti IL-6 umano, diluente campione e HRP-coniugato (anticorpo monoclonale (murino) anti-IL-6), liofilizzato
- 2 bustine di alluminio ognuna con una curva degli étalon human IL-6 (colorata)
- 1 bottiglia (25 ml) con tampone di lavaggio concentrato 20x (soluzione salina tamponata con 1% Tween 20)*
- 1 flaconcino (15 ml) di soluzione del substrato (tetrametilbenzidina)
- 1 flaconcino (12 ml) con diluente campione
- 1 flaconcino (15 ml) di soluzione bloccante (acido fosforico 1M)
- 2 copripiastra adesivi
- 1 flaconcino controllo debole
- 1 flaconcino controllo forte

2 Istruzioni di Conservazione

Conservare la piastra ELISA e tutto il kit a -20°C . È possibile rimuovere la piastra e conservarla a -20°C , mentre i rimanenti reagenti del kit devono essere conservati tra 2° e 8°C . La scadenza del kit e dei reagenti è indicata sulle etichette.

La data di scadenza dei componenti del kit può essere garantita solo se questi sono conservati correttamente e, in caso di uso ripetuto di un componente, il reagente non è stato contaminato durante la prima manipolazione.

3 Preparazione Dei Reagenti

3.1 Tampone di lavaggio

Se il tampone di lavaggio concentrato presenta cristalli in sospensione, riscaldare lievemente il tampone fino a ottenere la completa dissoluzione dei cristalli.

Versare l'intero contenuto (25 ml) del tampone di lavaggio concentrato in un cilindro graduato pulito da 500 ml. Portare il volume finale a 500 ml utilizzando acqua distillata o acqua deionizzata. Mescolare delicatamente per evitare la formazione di schiuma. Il pH della soluzione finale si deve regolare a 7,4.

Trasferire il prodotto in una bottiglia pulita e conservare a temperature comprese fra 2 °C e 25 °C. Il tampone di lavaggio è stabile per 30 giorni.

3.2 Controllo

Solubilizzare aggiungendo 300 µl di acqua distillata al controllo liofilizzato. Agitare o mescolare delicatamente per assicurare una solubilizzazione completa ed omogenea. In seguito considerare il controllo allo stesso modo dei campioni del dosaggio. Per il range dei valori del controllo si rimanda al certificato di analisi o all'etichetta presente sulla fiala.

4 Procedura del Test

- ~ Usare la piastra immediatamente dopo la rimozione dall'ambiente refrigerato a -20°C !
 - ~ Non attendere la completa dissoluzione dei pellet prima di usare i campioni; la reazione di legame nelle strip degli étalon inizia immediatamente dopo l'aggiunta di acqua!
 - ~ Non cercare di dissolvere i pellet pipettando su e giù nei pozzetti; particelle del pellet possono aderire al puntale determinando una notevole variabilità dei risultati.
 - ~ Eseguire la fase di lavaggio con almeno 400 μl di tampone di lavaggio come indicato nel manuale o riempire completamente i pozzetti; in caso contrario non sarà possibile rimuovere tutti i residui del pellet adesi al bordo del pozzetto, determinando una notevole variabilità dei risultati.
 - ~ Rimuovere con cautela i fogli protettivi delle strip degli étalon per lasciare tutti i pellet liofilizzati nei pozzetti.
- a. Stabilire il numero di strip dei micropozzetti necessarie per analizzare la quantità desiderata di campioni più le **strip** per i blank e gli étalon (**colorate**). Tutti i campioni, gli étalon, il blank e i campioni di controllo opzionali devono essere processati in duplicato. Rimuovere dal supporto le **strip micropozzetti** non utilizzate e conservarle nella bustina metallica contenente la polvere essiccante, mantenendole a -20°C e perfettamente sigillate. Mettere le strip contenenti la curva étalon nelle posizioni da A1/A2 a H1/H2 (vedere la Table 9).
 - b. Dispensare 100 μl di acqua distillata nei pozzetti dei campioni.
 - c. Dispensare acqua distillata a tutti i pozzetti per lo standard ed il bianco come indicato sull'etichetta degli standard strip (A1, A2 fino a H1, H2)

Table 9

	1	2	3	4
A	Standard 1 (100.00 pg/ml)	Standard 1 (100.00 pg/ml)	Campione 1	Campione 1
B	Standard 2 (50.00 pg/ml)	Standard 2 (50.00 pg/ml)	Campione 2	Campione 2
C	Standard 3 (25.00 pg/ml)	Standard 3 (25.00 pg/ml)	Campione 3	Campione 3
D	Standard 4 (12.50 pg/ml)	Standard 4 (12.50 pg/ml)	Campione 4	Campione 4
E	Standard 5 (6.25 pg/ml)	Standard 5 (6.25 pg/ml)	Campione 5	Campione 5
F	Standard 6 (3.13 pg/ml)	Standard 6 (3.13 pg/ml)	Campione 6	Campione 6
G	Standard 7 (1.56 pg/ml)	Standard 7 (1.56 pg/ml)	Campione 7	Campione 7
H	Blind Campione	Blind Campione	Campione 8	Campione 8

d. Dispensare 50 µl di ciascun **campione**, in duplicato, nei pozzetti di reazione e mescolare il contenuto.

Coprire con un **copripietra** e incubare a temperatura ambiente

e. (18-25 °C) per 3 ore utilizzando, se disponibile, un vortex a 200 rpm.

f. Rimuovere il **copripietra** e svuotare i pozzetti. Lavare 3 volte le strip micropozzetti utilizzando circa 400 µl di tampone di lavaggio per pozzetto, aspirando accuratamente il contenuto dei micropozzetti tra un lavaggio e l'altro. Evitare di scalfire la superficie dei micropozzetti.

g. Dopo l'ultimo lavaggio, asciugare le strip micropozzetti con un tampone o carta assorbente per rimuovere il tampone di lavaggio in eccesso. Utilizzare le strip subito dopo il lavaggio o sistemarle

capovolte su carta assorbente umida per non più di 15 min. Non lasciar asciugare i pozzetti.

- h. Pipettare 100 µl di **soluzione substrato TMB** in tutti i pozzetti, inclusi quelli del blank.
- i. Incubare le strip a temperatura ambiente (18-25° C) per circa 10 minuti. Evitare l'esposizione diretta a luci intense. **È necessario monitorare i valori O.D. a livello della piastra e interrompere la reazione del substrato prima che i pozzetti positivi cessino di essere appropriatamente registrabili.**
Si raccomanda di aggiungere la soluzione di stop quando lo standard più elevato ha sviluppato un colore blu scuro.
Alternativamente lo sviluppo del colore può essere monitorato con un lettore ELISA a 620 nm. La reazione del substrato deve essere bloccata non appena viene misurato un valore delle OD di 0.6 - 0.65.
- j. Interrompere la reazione enzimatica pipettando rapidamente 100 µl di **soluzione bloccante** in ciascun pozzetto, inclusi i pozzetti del blank. È importante che la soluzione bloccante si diffonda rapidamente e uniformemente attraverso i micropozzetti per inattivare completamente l'enzima. I risultati devono essere letti immediatamente dopo l'aggiunta della soluzione bloccante o entro 1 ora se le strip sono conservate in un luogo buio a 2-8° C.
- k. Leggere l'assorbanza di ciascun micropozzetto su uno spettrofotometro che utilizza 450 nm come lunghezza d'onda primaria (620 nm come lunghezza d'onda di riferimento alternativa; valori da 610 nm a 650 nm sono accettabili). Azzerare il lettore della piastra secondo le istruzioni del produttore e utilizzando i pozzetti del blank. Determinare l'assorbanza sia dei campioni, sia degli étalon di human IL-6.