

PRODUCT INFORMATION AND MANUAL

***Mouse IL-4
Instant ELISA***

BMS613INST

Enzyme-linked immunosorbent assay for quantitative
detection of mouse IL-4.

For research use only.

Not for in vitro diagnostic or therapeutic procedures.

128 Tests

**mouse IL-4
BMS613INST**



Bender MedSystems GmbH
Campus Vienna Biocenter 2
A-1030 Vienna, Austria, Europe

TABLE OF CONTENTS

1	Intended Use	3
2	Summary	3
3	Principles of the Test	3
4	Reagents Provided	5
5	Storage Instructions	6
6	Specimen Collection	6
7	Materials Required But Not Provided	7
8	Precautions for Use	7
9	Preparation of Reagents and Samples	9
10	Test Protocol	10
11	Calculation of Results	14
12	Limitations	18
13	Performance Characteristics	18
14	Bibliography	23
15	Ordering Information	26
16	Reagent Preparation Summary	27
17	Test Protocol Summary	28

1 Intended Use

The mouse IL-4 Instant ELISA is an enzyme-linked immunosorbent assay for the quantitative detection of mouse IL-4. **The mouse IL-4 Instant ELISA is for research use only. Not for use in diagnostic or therapeutic procedures.**

2 Summary

IL-4 mediates its function by binding to receptors expressed on target cells. The IL-4 receptors exhibit an affinity of approximately 10^{-10} M (17). Receptors exist on freshly prepared B and T lymphocytes and macrophages, as well as on various cell lines including lymphoid cells, mast cell lines, a variety of other hematopoietic cell lines, fibroblasts and stromal cell lines (10, 13, 15). On T and B cells, receptors are present in low numbers (appr. 400), which are reported to be upregulated by IL-2 and IL-4 (4, 12, 14).

IL-4 is produced by a particular subset of T helper cells, the TH2 cells. These cells tend to make a specific set of lymphokines including IL-4, IL-5, IL-6, IL-10, IL-13 and GM-CSF and fail to produce IL-2, IFN γ , and lymphotoxin (TNF α) (17). Apart from T cells, it has been shown that mast cells can produce IL-4 (18).

IL-4 exerts numerous effects on various hematopoietic cell types. On B cells, IL-4 promotes immunological class switching to IgE and IgG1 isotypes and upregulates MHC class II and CD23 expression (2, 8, 19, 20). It can promote survival, growth, and differentiation of both T and B lymphocytes (1, 3, 5, 21), mast cells (6, 11), and endothelial cells (22). In addition, IL-4 can inhibit the production of TNF, IL-1, and IL-6 by macrophages (7, 9).

3 Principles of the Test

An anti-mouse IL-4 coating antibody is adsorbed onto microwells. mouse IL-4 present in the sample or standard binds to antibodies adsorbed to the microwells; a biotin-conjugated anti-mouse IL-4 antibody binds to mouse IL-4 captured by the first antibody. Streptavidin-HRP binds to the biotin conjugated anti-mouse IL-4.

Following incubation unbound biotin conjugated anti-mouse IL-4 and Streptavidin-HRP is removed during a wash step, and substrate solution reactive with HRP is added to the wells.

A coloured product is formed in proportion to the amount of mouse IL-4 present in the sample. The reaction is terminated by addition of acid and absorbance is measured at 450 nm. A standard curve is prepared from 7 mouse IL-4 standard dilutions and mouse IL-4 sample concentration determined.

Figure 1

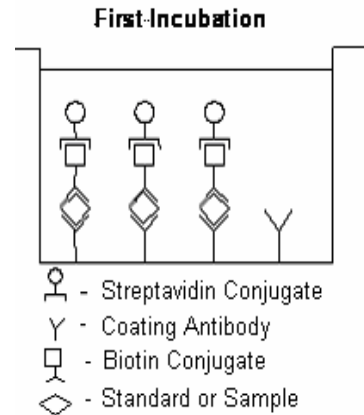


Figure 2

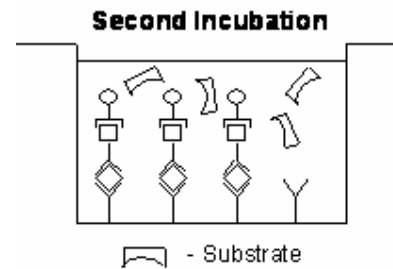
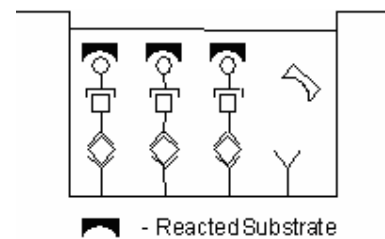


Figure 3



4 Reagents Provided

- 1 aluminium pouch with a **Microwell Plate coated** with monoclonal antibody to mouse IL-4, **Biotin-Conjugate** (anti-mouse IL-4 monoclonal antibody), **Streptavidin-HRP** and Sample Diluent, lyophilized
- 2 aluminium pouches with a mouse IL-4 **Standard curve** (coloured)
- 1 bottle (25 ml) **Wash Buffer Concentrate** 20x (phosphate-buffered saline with 1% Tween 20)
- 1 vial (12 ml) **Sample Diluent** (Use when an external predilution of the samples is needed)
- 1 vial (15 ml) **Substrate Solution** (tetramethyl-benzidine)
- 1 vial (15 ml) **Stop Solution** (1M Phosphoric acid)
- 2 **Adhesive Films**

5 Storage Instructions

Store ELISA plate and Standard curves or whole kit at -20°C. The plate and the standard curves can also be removed, stored at -20°C, remaining kit reagents can be stored between 2° and 8°C. Expiry of the kit and reagents is stated on labels.

The expiry of the kit components can only be guaranteed if the components are stored properly, and if, in case of repeated use of one component, the reagent is not contaminated by the first handling.

6 Specimen Collection

Cell culture supernatant and serum were tested with this assay. Other body fluids might be suitable for use in the assay. Remove serum from the clot as soon as possible after clotting.

Samples containing a visible precipitate must be clarified prior to use in the assay. Do not use grossly hemolyzed or lipemic specimens.

Pay attention to a possible “**Hook Effect**” due to high sample concentrations (see 11.).

Samples must be stored frozen at -20°C to avoid loss of bioactive mouse IL-4. If samples are to be run within 24 hours, they may be stored at 2° to 8°C (for sample stability refer to 13).

Avoid repeated freeze-thaw cycles. Prior to assay, the frozen sample should be brought to room temperature slowly and mixed gently.

7 Materials Required But Not Provided

- 5 ml and 10 ml graduated pipettes
- 5 μ l to 1000 μ l adjustable single channel micropipettes with disposable tips
- adjustable multichannel micropipettes (for volumes between 50 μ l and 500 μ l) with disposable tips
- Multichannel micropipette reservoir
- Beakers, flasks, cylinders necessary for preparation of reagents
- Device for delivery of wash solution (multichannel wash bottle or automatic wash system)
- Microwell strip reader capable of reading at 450 nm (620 nm as optional reference wave length)
- Glass-distilled or deionized water
- Statistical calculator with program to perform linear regression analysis

8 Precautions for Use

- All chemicals should be considered as potentially hazardous. We therefore recommend that this product is handled only by those persons who have been trained in laboratory techniques and that it is used in accordance with the principles of good laboratory practice. Wear suitable protective clothing such as laboratory overalls, safety glasses and gloves. Care should be taken to avoid contact with skin or eyes. In the case of contact with skin or eyes wash immediately with water. See material safety data sheet(s) and/or safety statements(s) for specific advice.
- Reagents are intended for in research use and are not for use in diagnostic or therapeutic procedures.
- Do not mix or substitute reagents with those from other lots or other sources.
- Do not use kit reagents beyond expiration date on label.

- Do not expose kit reagents to strong light during storage or incubation.
- Do not pipette by mouth.
- Do not eat or smoke in areas where kit reagents or samples are handled.
- Avoid contact of skin or mucous membranes with kit reagents or specimens.
- Rubber or disposable latex gloves should be worn while handling kit reagents or specimens.
- Avoid contact of substrate solution with oxidizing agents and metal.
- Avoid splashing or generation of aerosols.
- In order to avoid microbial contamination or cross-contamination of reagents or specimens which may invalidate the test use disposable pipette tips and/or pipettes.
- Use clean, dedicated reagent trays for dispensing substrate reagent.
- Glass-distilled water or deionized water must be used for reagent preparation.
- Substrate solution must be at room temperature prior to use.
- Decontaminate and dispose specimens and all potentially contaminated materials as they could contain infectious agents. The preferred method of decontamination is autoclaving for a minimum of 1 hour at 121.5°C.
- Liquid wastes not containing acid and neutralized waste may be mixed with sodium hypochlorite in volumes such that the final mixture contains 1.0% sodium hypochlorite. Allow 30 minutes for effective decontamination. Liquid waste containing acid must be neutralized prior to the addition of sodium hypochlorite.

9 Preparation of Reagents and Samples

The **buffer concentrate** should be brought to room temperature and diluted before starting the test procedure.

9.1 Wash Buffer

If crystals have formed in the **Wash Buffer Concentrate**, warm it gently until they have completely dissolved.

Pour entire contents (25 ml) of the Wash Buffer Concentrate into a clean 500 ml graduated cylinder. Bring to final volume to 500 ml with glass-distilled or deionized water. Mix gently to avoid foaming. The pH of the final solution should adjust to 7.4.

Transfer to a clean wash bottle and store at 2° to 25°C. Please note that Wash Buffer is stable for 30 days.

10 Test Protocol

- **Use plate immediately after removal from -20°C!**
 - **Do not wait until pellets have completely dissolved before applying samples - the binding reaction in the standard strips starts immediately after addition of water!**
 - **Do not try to dissolve pellets by pipetting up and down in the wells - some parts of the pellet could stick to the tip creating high variation of results.**
 - **Perform the washing step with at least 400 µl of washing buffer as stated in the manual or fill the wells completely - otherwise any pellet residues sticking to the rim of the well will not be removed and create high variation of results.**
 - **Allow the washing buffer to sit in the wells for a few seconds before aspiration.**
 - **Remove covers of the standard strips carefully so that all the lyophilized pellets remain in the wells.**
- a. Determine the number of Microwell Strips required to test the desired number of samples plus Microwell Strips for blanks and standards (coloured). Each sample, standard and blank should be assayed in duplicate. Remove extra Microwell Strips from holder and store in foil bag with the desiccant provided at -20°C sealed tightly. Place Microwell Strips containing the standard curve in position A1/A2 to H1/H2 (see Table 1).
 - b. Add 100 µl of **distilled water** to the **sample wells**.
 - c. Add **distilled water** to all **standard and blank wells** as indicated on the label of the standard strips (A1, A2 to H1, H2).

Table 1

Table depicting an example of the arrangement of blanks, standards and samples in the microwell strips:

	1	2	3	4
A	Standard 1 (250 pg/ml)	Standard 1 (250 pg/ml)	Sample 1	Sample 1
B	Standard 2 (125 pg/ml)	Standard 2 (125 pg/ml)	Sample 2	Sample 2
C	Standard 3 (62.5 pg/ml)	Standard 3 (62.5 pg/ml)	Sample 3	Sample 3
D	Standard 4 (31.3 pg/ml)	Standard 4 (31.3 pg/ml)	Sample 4	Sample 4
E	Standard 5 (15.6 pg/ml)	Standard 5 (15.6 pg/ml)	Sample 5	Sample 5
F	Standard 6 (7.8 pg/ml)	Standard 6 (7.8 pg/ml)	Sample 6	Sample 6
G	Standard 7 (3.9 pg/ml)	Standard 7 (3.9 pg/ml)	Sample 7	Sample 7
H	Blank	Blank	Sample 8	Sample 8

- d. Add 50 μl of each **sample**, in duplicate, to the **designated wells** and mix the contents.
- e. Cover with an adhesive film and incubate at room temperature (18°C to 25°C) for 3 hours, on a microplate shaker at 200 rpm. **Shaking is absolutely necessary for an optimal test performance.**
- f. Remove adhesive film and empty wells. **Wash** the microwell strips 3 times with approximately **400 μl** Wash Buffer per well with thorough aspiration of microwell contents between washes. Allow the Wash Buffer to sit in the wells for about **10 – 15 seconds** before aspiration. Take care not to scratch the surface of the microwells.

After the last wash, tap microwell strips on absorbent pad or paper towel to remove excess Wash Buffer. Use the microwell strips immediately after washing or place upside down on a wet absorbent paper for no longer than 15 minutes. Do not allow wells to dry.

- g. Pipette 100 μl of **TMB Substrate Solution** to all wells, including the blank wells.
- h. Incubate the microwell strips at room temperature (18° to 25°C) for about 10 min. Avoid direct exposure to intense light.

The colour development on the plate should be monitored and the substrate reaction stopped (see next point of this protocol) before positive wells are no longer properly recordable. Determination of the ideal time period for colour development has to be done individually for each assay.

It is recommended to add the Stop Solution when the highest standard has developed a dark blue colour. Alternatively the colour development can be monitored by the ELISA reader at 620 nm. The substrate reaction should be stopped as soon as Standard 1 has reached an OD of 0.6 – 0.65.

- i. Stop the enzyme reaction by quickly pipetting 100 μl of **Stop Solution** into each well, including the blank wells. It is important that the Stop Solution is spread quickly and uniformly throughout the microwells to completely inactivate the enzyme. Results must be

read immediately after the Stop Solution is added or within one hour if the microwell strips are stored at 2 - 8°C in the dark.

- j. Read absorbance of each microwell on a spectro-photometer using 450 nm as the primary wave length (optionally 620 nm as the reference wave length; 610 nm to 650 nm is acceptable). Blank the plate reader according to the manufacturer's instructions by using the blank wells. Determine the absorbance of both the samples and the mouse IL-4 standards.

11 Calculation of Results

- Calculate the average absorbance values for each set of duplicate standards and samples. Duplicates should be within 20 per cent of the mean.
- Create a standard curve by plotting the mean absorbance for each standard concentration on the ordinate against the mouse IL-4 concentration on the abscissa. Draw a best fit curve through the points of the graph (a 5-parameter curve fit is recommended).
- To determine the concentration of circulating mouse IL-4 for each sample, first find the mean absorbance value on the ordinate and extend a horizontal line to the standard curve. At the point of intersection, extend a vertical line to the abscissa and read the corresponding mouse IL-4 concentration.
- ***Samples have been diluted 1:2, thus the concentration read from the standard curve must be multiplied by the dilution factor (x 2).**
- **Calculation of samples with a concentration exceeding standard 1 may result in incorrect, low mouse IL-4 levels (Hook Effect). Such samples require further external predilution according to expected mouse IL-4 values with Sample Diluent in order to precisely quantitate the actual mouse IL-4 level.**
- It is suggested that each testing facility establishes a control sample of known mouse IL-4 concentration and runs this additional control with each assay. If the values obtained are not within the expected range of the control, the assay results may be invalid.
- A representative standard curve is shown in Figure 4. This curve cannot be used to derive test results. Every laboratory must prepare a standard curve for each group of microwell strips assayed.

* N.B: There is a common dilution factor for samples due to the conjugate which must then be included in the calculation. The samples contribute 100 μl to the final volume per well. These 100 μl are composed of 50 μl of Sample Diluent plus 50 μl of the sample. This is a 1:2 dilution.

The remaining 50 μl to give 150 μl are due to the addition of 50 μl conjugate to all wells.

50 μl Sample Diluent and 50 μl conjugate results in 100 μl reconstitution volume, addition of 50 μl sample (50 μl + 50 μl = 1:2 dilution)

Figure 4

Representative standard curve for mouse IL-4 Instant ELISA. mouse IL-4 was diluted in serial 2-fold steps in Sample Diluent. Each symbol represents the mean of 3 parallel titrations.

Do not use this standard curve to derive test results. A standard curve must be run for each group of microwell strips assayed.

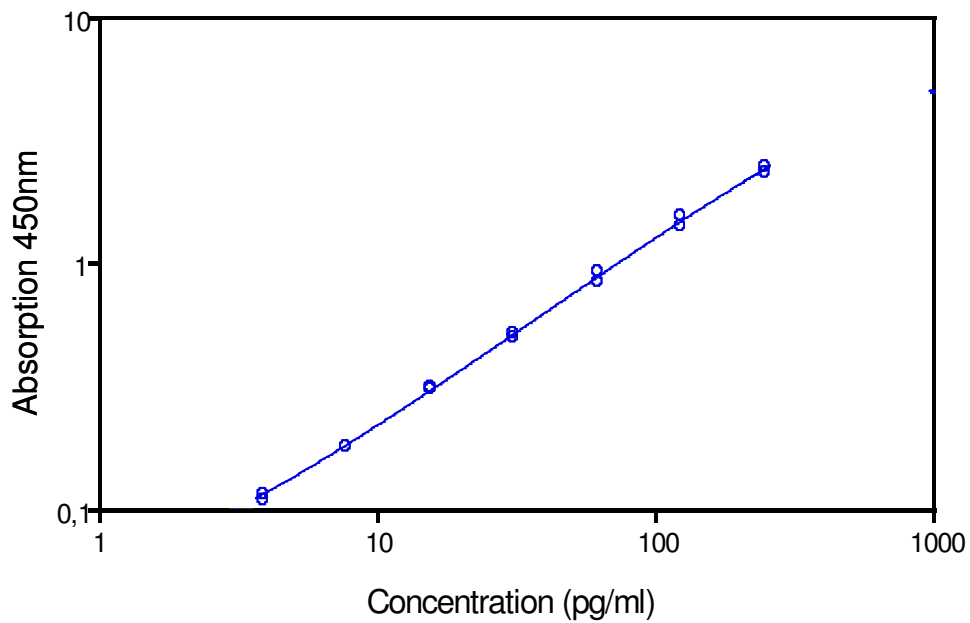


Table 2

Typical data using the mouse IL-4 INSTANT ELISA

Measuring wavelength: 450 nm

Reference wavelength: 620 nm

Standard	mouse IL-4 Concentration (pg/ml)	O.D. (450 nm)	O.D. Mean	C.V. (%)
1	250	2.323	2.388	2.7
	250	2.453		
2	125	1.539	1.468	4.8
	125	1.398		
3	62.5	0.909	0.867	4.8
	62.5	0.826		
4	31.3	0.497	0.505	1.7
	31.3	0.514		
5	15.6	0.313	0.309	1.6
	15.6	0.304		
6	7.8	0.179	0.179	0.1
	7.8	0.179		
7	3.9	0.115	0.111	3.3
	3.9	0.108		
Blank	0	0.043	0.046	8.0
	0	0.050		

The OD values of the standard curve may vary according to the conditions of assay performance (e.g. operator, pipetting technique, washing technique or temperature effects). Furthermore shelf life of the kit may affect enzymatic activity and thus colour intensity. Values measured are still valid.

12 Limitations

- Since exact conditions may vary from assay to assay, a standard curve must be established for every run.
- Bacterial or fungal contamination of either screen samples or reagents or cross-contamination between reagents may cause erroneous results.
- Disposable pipette tips, flasks or glassware are preferred, reusable glassware must be washed and thoroughly rinsed of all detergents before use.
- Improper or insufficient washing at any stage of the procedure will result in either false positive or false negative results. Empty wells completely before dispensing fresh wash solution, fill with Wash Buffer as indicated for each wash cycle and do not allow wells to sit uncovered or dry for extended periods.

13 Performance Characteristics

13.1 Sensitivity

The limit of detection of mouse IL-4 defined as the analyte concentration resulting in an absorbance significantly higher than that of the dilution medium (mean plus 2 standard deviations) was determined to be 0.6 pg/ml (mean of 8 independent assays).

13.2 Reproducibility

13.2.1 Intra-assay

Reproducibility within the assay was evaluated in 4 independent experiments. Each assay was carried out with 6 replicates of 8 serum samples containing different concentrations of mouse IL-4. 2 standard curves were run on each plate. Data below show the mean mouse IL-4 concentration and the coefficient of variation for each sample (see Table 3). The calculated overall intra-assay coefficient of variation was 6.6%.

Table 3

The mean mouse IL-4 concentration and the coefficient of variation for each sample.

Positive Sample	Experiment	mouse IL-4 Concentration (pg/ml)	Coefficient of Variation (%)
1	1	187	5.5
	2	163	9.8
	3	163	11.7
	4	148	8.9
2	1	65	5.2
	2	64	7.9
	3	61	4.0
	4	53	3.9
3	1	32	13.1
	2	31	7.3
	3	36	4.7
	4	33	4.2
4	1	9	11.8
	2	10	7.2
	3	9	5.6
	4	8	10.2
5	1	161	6.0
	2	136	10.1
	3	128	4.6
	4	116	10.2
6	1	35	4.6
	2	29	6.9
	3	26	4.4
	4	24	6.8
7	1	233	3.7
	2	217	7.0
	3	225	7.4
	4	165	4.3
8	1	60	3.8
	2	63	3.5
	3	58	4.1
	4	49	4.0

13.2.2 Inter-assay

Assay to assay reproducibility within one laboratory was evaluated in 4 independent experiments. Each assay was carried out with 6 replicates of 8 serum samples containing different concentrations of mouse IL-4. 2 standard curves were run on each plate. Data below show the mean mouse IL-4 concentration and the coefficient of variation calculated on 24 determinations of each sample (see Table 4). The calculated overall inter-assay coefficient of variation was 11.1%.

Table 4

The mean mouse IL-4 concentration and the coefficient of variation of each sample

Sample	Mean mouse IL-4 Concentration (pg/ml)	Coefficient of Variation (%)
1	165	9.8
2	61	9.3
3	33	6.6
4	9	6.9
5	135	14.0
6	28	17.4
7	210	14.6
8	58	10.5

13.3 Spike Recovery

The spike recovery was evaluated by spiking 4 levels of mouse IL-4 into serum. Recoveries were determined in 3 independent experiments with 6 replicates each. The unspiked serum plasma cell culture supernatant was used as blank in these experiments.

The overall mean recovery was 77%.

13.4 Dilution Parallelism

4 Serum samples with different levels of mouse IL-4 were analysed at serial 2 fold dilutions with 4 replicates each. The overall mean recovery was 105%.

13.5 Sample Stability

13.5.1 Freeze-Thaw Stability

Aliquots of spiked serum samples were stored at -20 °C and thawed up to 5 times, and the mouse IL-4 levels determined.

There was no significant loss of mouse IL-4 immunoreactivity detected by freezing and thawing.

13.5.2 Storage Stability

Aliquots of serum samples (spiked or unspiked) were stored at -20 °C, 2-8 °C, room temperature (RT) and at 37 °C, and the mouse IL-4 level determined after 24 h.

There was no significant loss of mouse IL-4 immunoreactivity during storage at -20 °C, 4 °C and room temperature. Storage at 37 °C gave about 50 % loss of mouse IL-4 immunoreactivity.

13.6 Specificity

The interference of circulating factors of the immune system was evaluated by spiking these proteins at physiologically relevant concentrations into positive serum.

There was no crossreactivity detected.

13.7 Expected Values

There were no detectable mouse IL-4 levels found. Elevated mouse IL-4 levels depend on the type of immunological disorder.

13.8 Calibration

The immunoassay is calibrated with highly purified recombinant mouse IL-4 which has been evaluated against the international Reference Standard NIBSC 91/656 and has been shown to be equivalent. NIBSC 91/656 is quantitated in International Units (IU), 1IU corresponding to 100 pg mouse IL-4.

14 Bibliography

- 1) Brown M., J. Hu-Li, and W. E. Paul. (1988). IL-4/B cell stimulatory factor-1 stimulates T cell growth by an IL-2 independent mechanism. *J. Immunol.* 141, 504-511.
- 2) Coffman R. L., J. Ohara, M. W. Bond, J. Carty, A. Zlotnik, and W. E. Paul. (1986). B cell stimulatory factor-1 enhances IgE response of lipopolysaccharide-activated B cells. *J. Immunol.* 136, 4538-4541.
- 3) De France T., T. Vanbervliet, J. P Aubrey, et al. (1987). B cell growth promoting activity of recombinant human interleukin 4. *J. Immunol.* 139, 1135-1141.
- 4) Foxwell B. M. J., G. Woerly, and B. Ruffel. (1989). Identification of interleukin 4 receptor-associated proteins and expression of both high and low-affinity binding on human lymphoid cells. *Eur. J. Immunol.* 19, 1637-1641.
- 5) Grabstein K. H., L. S. Park, P. J. Morrissey, H. Sassenfeld, V. Price, D. L. Urdal, and M. B. Widmer. (1987). Regulation of murine T cell proliferation by B cell stimulatory factor-1. *J. Immunol.* 139, 1148-1153.
- 6) Hamaguchi Y, Y. Kanakura, J. Fujita, et al. (1987). Interleukin 4 as an essential factor for in vitro clonal growth of murine connective tissue-type mast cells. *J. Exp. Med.* 165, 268-273.
- 7) Hart P. H., G. F. Vitti, D. R. Burgess, G. A. Whitty, D. S. Piccoli, and J. A. Hamilton. (1989). Potential antiinflammatory effects of interleukin 4: suppression of human monocyte, tumour necrosis factor α , interleukin 1, and prostaglandin E2. *Proc. Natl. Acad. Sci, USA* 86, 3803-3807.
- 8) Kikutani H, S. Inui, R. Sato et al. (1986). Molecular structure of human lymphocyte receptor for immunoglobulin. *Cell* 47, 657-665.
- 9) Lee J. D., S. G. Swisher, E. H. Minehart, W. H. McBride, and J. S. Economou. (1990). Interleukin 4 downregulates interleukin 6 production in human peripheral blood mononuclear cells. *J. Leukocyte Biol.* 47, 475-479.

- 10) Lowenthal J., B. Castle, J. Schreurs, D. Rennick, N. Arai, P. Hoy, Y. Takebe, and M. Howard. (1988). Expression of high affinity receptors for interleukin 4 on hemopoietic and non-hemopoietic cells. *J. Immunol.* 140, 456.
- 11) Mossman T. R., M. W. Bond, R. L. Coffman, J. Ohara, and W. E. Paul. (1986). T-cell and mast cell lines respond to B-cell stimulator factor-1. *Proc. Natl. Acad. Sci. USA*, 5654-5658.
- 12) Puri R. K., D. S. Finbloom, P. Leland, M. Mostowski, and J. P. Siegel. (1990). Expression of high affinity IL-4 receptors on murine tumour infiltrating lymphocytes and their upregulation by IL-2. *Immunol.* 70, 492-497.
- 13) Ohara J., and W. E. Paul. (1987). Receptors for B-cell stimulatory factor-1 expressed on cells of hematopoietic lineage. *Nature* 325, 537.
- 14) Ohara J., and W. E. Paul. (1988). Upregulation of interleukin 4/B cell stimulatory factor-1 receptor expression. *Proc. Natl. Acad. Sci. USA* 85, 8221-8225.
- 15) Park L., D. Friend, K. Grabstein, and D. Urdal. (1987). Characterization of the high-affinity cell-surface receptor for murine B-cell stimulating factor. *Proc. Natl. Acad. Sci. USA* 84, 1669.
- 16) Paul W. E. (1991). Interleukin-4: A prototypic immunoregulatory lymphokine. *Blood* 77, 1859-1870.
- 17) Plaut M., J. H. Pierce, C. J. Watson, J. Hanley-Hyde, R. P. Nordan, and W. E. Paul. (1989). Mast cell lines produce lymphokines in response to cross linkage of FcεR1 or to calcium ionophores. *Nature* 339, 64-67.
- 18) Roehm N. W., H. J. Leibson, A. Zlotnik, J. Kappler, P. Marrack, and J. Cambier. (1984). Interleukin-induced increase in Ia expression by normal mouse B cells. *J. Exp. Med.* 160, 679-694.
- 19) Sideras P., S. Bergstedt-Lindqvist, H. R. MacDonald, and E. Severinson. (1985). Secretion of IgG1 induction factor by T cell clones and hybridomas. *Eur. J. Immunol.* 15, 586-593.

- 20) Spits H., H. Yssel, X. Paliard, R. Kastelein, C. Figdor, and J. E. DeVries. (1988). IL-4 inhibits IL-2 mediated induction of human lymphokine activated killer cells but not the generation of antigen specific cytotoxic T lymphocytes in mixed leukocyte cultures. *J. Immunol.* 141, 29-36.
- 21) Toi M., A. L. Harris, and R. Bicknell. (1991). Interleukin 4 is a potent mitogen for capillary endothelium. *Biochem. Biophys. Res. Commun.* 174, 1287-1293.

For literature update refer to **www.bendermedsystems.com**

15 Ordering Information

For orders please contact:

Europe-Headquarters

Bender MedSystems GmbH
Campus Vienna Biocenter 2
A-1030 Vienna, Austria, Europe
phone: +43 1 796 40 40 ext. 114
fax: +43 1 796 40 40 ext. 400
e-mail: order@bendermedsystems.com

USA

Bender MedSystems, Inc.
849 Hinckley Road
Burlingame, CA 94010, USA
toll-free phone: +1 (866) 952 2112
toll-free fax: +1 (877) 952 2112
phone: +1 (650) 952 2112
fax: +1 (650) 952 2252

For technical information please contact:

e-mail: techserv@bendermedsystems.com
www.bendermedsystems.com

Cat.No. BMS613INST mouse IL-4 INSTANT ELISA

16 Reagent Preparation Summary

16.1 Wash Buffer

Add **Wash Buffer Concentrate** 20 x (25 ml) to 475 ml distilled water

17 Test Protocol Summary

- Place standard strips in position A1/A2 to H1/H2.
- Add 100 µl distilled water to sample wells.
- Add distilled water, in duplicate, to all standard and blank wells as indicated on the label of the standard strips.
- Add 50 µl sample to designated wells.
- Cover microwell strips and incubate 3 hours at room temperature (18° to 25°C) on a microplate shaker at 200 rpm. **Shaking is absolutely necessary for an optimal test performance.**
- Empty and wash microwell strips 3 times with 400 µl Wash Buffer.
- Add 100 µl of TMB Substrate Solution to all wells including blank wells.
- Incubate the microwell strips for about 10 minutes at room temperature (18° to 25°C).
- Add 100 µl Stop Solution to all wells including blank wells.
- Blank microwell reader and measure colour intensity at 450 nm.

Note: Samples have been diluted 1:2, thus the concentration read from the standard curve must be multiplied by the dilution factor (x 2)