

PRODUCT INFORMATION AND MANUAL

human IFN- γ Instant ELISA

BMS228INST

Enzyme-linked immunosorbent assay for quantitative
detection of human IFN- γ .

For research use only.

Not for diagnostic or therapeutic procedures.

128 Tests

**human IFN- γ
BMS228INST**



Bender MedSystems GmbH
Campus Vienna Biocenter 2
A-1030 Vienna, Austria, Europe

TABLE OF CONTENTS

1	Intended Use	3
2	Summary	3
3	Principles of the Test	6
4	Reagents Provided	7
5	Storage Instructions	7
6	Specimen Collection	8
7	Materials Required But Not Provided	9
8	Precautions for Use	10
9	Preparation of Reagents and Samples	12
10	Test Protocol	13
11	Calculation of Results	17
12	Limitations	20
13	Performance Characteristics	21
14	Bibliography	26
15	Ordering Information	29
16	Reagent Preparation Summary	30
17	Test Protocol Summary	31

1 Intended Use

The human IFN- γ Instant ELISA is an enzyme-linked immunosorbent assay for the quantitative detection of human Interferon- γ in cell culture supernatants, human serum, plasma, urine, synovial fluid, amniotic fluid or other body fluids. The human IFN- γ Instant ELISA is **for research use only. Not for diagnostic or therapeutic procedures.**

2 Summary

IFN- γ , also called Type II interferon, is a homodimeric glycoprotein containing approximately 21 to 24 kD subunits. The human IFN- γ gene, situated on chromosome 12, contains three introns; the four exons code for a polypeptide of 166 amino acids, 20 of which constitute the signal peptide (11).

In contrast to IFN- α and IFN- β synthesis, which can occur in any cell, production of IFN- γ is a function of T cells and NK cells. All IFN- γ inducers activate T cells either in a polyclonal (mitogens or antibodies) or in a clonally restricted, antigen-specific, manner.

IFN- γ is produced during infection by T cells of the cytotoxic/suppressor phenotype (CD8) and by a subtype of helper T cells, the Th1 cells. Th1 cells secrete IL-2, IL-3, TNF- β and IFN- γ , whereas Th2 cells mainly produce IL-3, IL-4, IL-5, and IL-10, but little or no IFN- γ (9). IFN- γ preferentially inhibits the proliferation of Th2 but not Th1 cells, indicating that the presence of IFN- γ during an immune response will result in the preferential proliferation of Th1 cells (7).

Type II IFN or IFN- γ is a lymphokine that displays no molecular homology with type I IFN, but shares some important biologic activities. Specifically, IFN- γ induces an anti-viral state and is anti-proliferative. In addition, IFN- γ has several properties related to immunoregulation.

(1) IFN- γ is a potent activator of mononuclear phagocytes, e.g. IFN- γ stimulates the expression of Mac-1, augments endocytosis and phagocytosis by monocytes (15), and activates macrophages to kill tumor cells by releasing reactive oxygen intermediates and TNF- α (21).

(2) IFN- γ induces or augments the expression of MHC antigens on macrophages, T and B cells and some tumor cell lines (3).

(3) On T and B cells IFN- γ promotes differentiation. It enhances proliferation of activated B cells and can act synergistically with IL-2 to increase immunoglobulin light-chain synthesis. (8,13). IFN- γ is one of the natural B-cell differentiation factors (17).

(4) Finally, IFN- γ activates neutrophils, NK cells and vascular endothelial cells (6).

The role of IFN- γ as a disease marker has been demonstrated for a number of different pathological situations:

- infections: IFN- γ is produced during viral infections (4). IFN- γ is a diagnostic tool for distinguishing tuberculous from other non-tuberculous ascites (5,18). IFN- γ values in pleural fluid are significantly higher in tuberculous pleuritis patients than those in non-tuberculous pleuritis patients, with a sensitivity and a specificity of 100% (1, 2). Therapy-induced (treatment with thalidomide) alleviation of clinical symptoms of erythema nodosum leprosum correlates with IFN- γ and TNF- α levels (14). Tuberculoid leprosy patients show increased lymphocyte proliferation and IFN- γ production in response to stimulation with *Mycobacterium leprae* as compared to lepromatous leprosy patients and healthy individuals (16).

- autoimmune diseases: Accurate measurements of cellular production of cytokines, e.g. IFN- γ is important in the design and monitoring of immunotherapy of multiple sclerosis (12).

- transplant rejection: Intragraft IFN- γ mRNA expression occurs in active acute transplant rejection preceding clinical transplant rejection, thus offering an early diagnostic tool for detection of transplant rejection (10).

- allergy: IFN- γ production by isolated lymphocytes is not detectable in patients with cow's milk allergy as compared to control individuals (19). Infants who develop atopy produce significantly less IFN- γ at birth compared to infants who do not develop atopy (20).

- diabetes: Peripheral blood lymphomononuclear cells from newly diagnosed type I diabetes produce significantly less IFN- γ in comparison to controls and long-standing diabetes (4).

3 Principles of the Test

An anti-human IFN- γ monoclonal coating antibody is adsorbed onto microwells. Human IFN- γ present in the sample or standard binds to antibodies adsorbed to the microwells; a biotin-conjugated monoclonal anti-human IFN- γ antibody binds to human IFN- γ captured by the first antibody. Streptavidin-HRP binds to the biotin conjugated anti-human IFN- γ .

Following incubation unbound biotin conjugated anti human IFN- γ and Streptavidin-HRP is removed during a wash step, and substrate solution reactive with HRP is added to the wells.

A coloured product is formed in proportion to the amount of soluble human IFN- γ present in the sample. The reaction is terminated by addition of acid and absorbance is measured at 450 nm. A standard curve is prepared from seven human IFN- γ standard dilutions and human IFN- γ sample concentration determined.

Figure 1

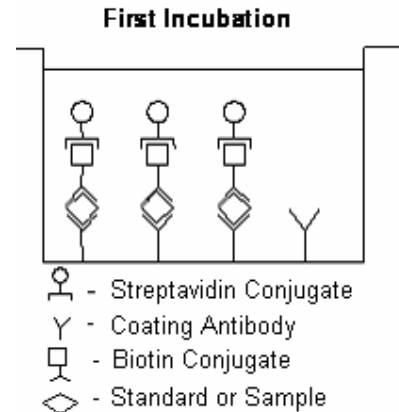


Figure 2

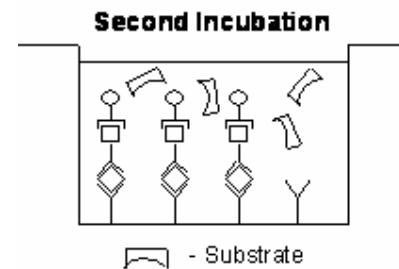
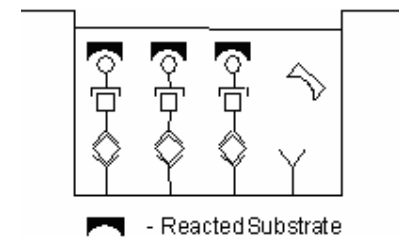


Figure 3



4 Reagents Provided

- 1 aluminium pouch with a **Microwell Plate coated with Monoclonal Antibody** (murine) to human IFN- γ , **Biotin-Conjugate** (anti-IFN- γ monoclonal antibody), Sample Diluent and **Streptavidin-HRP**, lyophilized
- 2 aluminium pouches with a **human IFN- γ Standard curve (coloured)**
- 1 bottle (25 ml) **Wash Buffer Concentrate 20x** (phosphate-buffered saline with 1% Tween 20)
- 1 vial (15 ml) **Substrate Solution** (tetramethyl-benzidine)
- 1 vial (12 ml) **Sample Diluent** (Use when an external predilution of the samples is needed)
- 1 vial (15 ml) **Stop Solution** (1M Phosphoric acid)
- 2 adhesive **Plate Covers**

5 Storage Instructions

Store ELISA plate and Standard curves or whole kit at -20 °C. The plate and the standard curves can also be removed, stored at -20 °C, remaining kit reagents can be stored between 2 ° and 8 °C. Expiry of the kit and reagents is stated on labels.

The expiry of the kit components can only be guaranteed if the components are stored properly, and if, in case of repeated use of one component, the reagent is not contaminated by the first handling.

6 Specimen Collection

Cell culture supernatants, human serum, plasma, urine, synovial fluid, amniotic fluid or other body fluids are suitable for use in the assay. Remove the serum or plasma from the clot or red cells as soon as possible after clotting and separation.

Samples containing a visible precipitate must be clarified prior to use in the assay. Do not use grossly hemolyzed or lipemic specimens.

Samples must be stored frozen at -20°C to avoid loss of bioactive human IFN- γ . If samples are to be run within 24 hours, they may be stored at 2° to 8°C (for sample stability refer to 13).

Avoid repeated freeze-thaw cycles. Prior to assay, frozen serum or plasma should be brought to room temperature slowly and mixed gently.

7 Materials Required But Not Provided

- 5 ml and 10 ml graduated pipettes
- 5 μ l to 1000 μ l adjustable single channel micropipettes with disposable tips
- 50 μ l to 300 μ l adjustable multichannel micropipette with disposable tips
- Multichannel micropipette reservoir
- Beakers, flasks, cylinders necessary for preparation of reagents
- Device for delivery of wash solution (multichannel wash bottle or automatic wash system)
- Microwell strip reader capable of reading at 450 nm (620 nm as optional reference wave length)
- Glass-distilled or deionized water
- Statistical calculator with program to perform linear regression analysis

8 Precautions for Use

- All chemicals should be considered as potentially hazardous. We therefore recommend that this product is handled only by those persons who have been trained in laboratory techniques and that it is used in accordance with the principles of good laboratory practice. Wear suitable protective clothing such as laboratory overalls, safety glasses and gloves. Care should be taken to avoid contact with skin or eyes. In the case of contact with skin or eyes wash immediately with water. See material safety data sheet(s) and/or safety statements(s) for specific advice.
- Reagents are intended for research use only and are not for use in diagnostic or therapeutic procedures.
- Do not mix or substitute reagents with those from other lots or other sources.
- Do not use kit reagents beyond expiration date on label.
- Do not expose kit reagents to strong light during storage or incubation.
- Do not pipette by mouth.
- Do not eat or smoke in areas where kit reagents or samples are handled.
- Avoid contact of skin or mucous membranes with kit reagents or specimens.
- Rubber or disposable latex gloves should be worn while handling kit reagents or specimens.
- Avoid contact of substrate solution with oxidizing agents and metal.
- Avoid splashing or generation of aerosols.
- In order to avoid microbial contamination or cross-contamination of reagents or specimens which may invalidate the test use disposable pipette tips and/or pipettes.
- Use clean, dedicated reagent trays for dispensing substrate reagent.

- Glass-distilled water or deionized water must be used for reagent preparation.
- Substrate solution must be at room temperature prior to use.
- Decontaminate and dispose specimens and all potentially contaminated materials as they could contain infectious agents. The preferred method of decontamination is autoclaving for a minimum of 1 hour at 121.5°C.
- Liquid wastes not containing acid and neutralized waste may be mixed with sodium hypochlorite in volumes such that the final mixture contains 1.0% sodium hypochlorite. Allow 30 minutes for effective decontamination. Liquid waste containing acid must be neutralized prior to the addition of sodium hypochlorite.

9 Preparation of Reagents and Samples

9.1 Wash Buffer

If crystals have formed in the Wash Buffer Concentrate, warm it gently until they have completely dissolved.

Pour entire contents (25 ml) of the Wash Buffer Concentrate into a clean 500 ml graduated cylinder. Bring to final volume to 500 ml with glass-distilled or deionized water. Mix gently to avoid foaming. The pH of the final solution should adjust to 7.4.

Transfer to a clean wash bottle and store at 2° to 25°C. Please note that Wash Buffer is stable for 30 days.

10 Test Protocol

- **Use plate immediately after removal from -20°C!**
 - **Do not wait until pellets have completely dissolved before applying samples - the binding reaction in the standard strips starts immediately after addition of water!**
 - **Do not try to dissolve pellets by pipetting up and down in the wells - some parts of the pellet could stick to the tip creating high variation of results**
 - **Perform the washing step with at least 400 µl of washing buffer as stated in the manual or fill the wells completely - otherwise any pellet residues sticking to the rim of the well will not be removed and create high variation of results**
 - **Allow the washing buffer to sit in the wells for a few seconds before aspiration**
 - **Remove covers of the standard strips carefully in order that all the lyophilised pellets remain in the wells**
- a. Determine the number of Microwell Strips required to test the desired number of samples plus Microwell Strips for blanks and standards (coloured). Each sample, standard, blank, and optional control sample should be assayed in duplicate. Remove extra Microwell Strips from holder and store in foil bag with the desiccant provided at -20°C sealed tightly. Place microwell strips containing the standard curve in position A1/A2 to H1/H2 (see Table 1).
 - b. Add 100 µl of distilled water to the sample wells.
 - c. Add distilled water to all standard and blank wells as indicated on the label of the standard strips (A1, A2 to H1, H2).

Table 1

Table depicting an example of the arrangement of blanks, standards and samples in the microwell strips:

	1	2	3	4
A	Standard 1 (100.00 pg/ml)	Standard 1 (100.00 pg/ml)	Sample 1	Sample 1
B	Standard 2 (50.00 pg/ml)	Standard 2 (50.00 pg/ml)	Sample 2	Sample 2
C	Standard 3 (25.00 pg/ml)	Standard 3 (25.00 pg/ml)	Sample 3	Sample 3
D	Standard 4 (12.50 pg/ml)	Standard 4 (12.50 pg/ml)	Sample 4	Sample 4
E	Standard 5 (6.25 pg/ml)	Standard 5 (6.25 pg/ml)	Sample 5	Sample 5
F	Standard 6 (3.13 pg/ml)	Standard 6 (3.13 pg/ml)	Sample 6	Sample 6
G	Standard 7 (1.56 pg/ml)	Standard 7 (1.56 pg/ml)	Sample 7	Sample 7
H	Blank	Blank	Sample 8	Sample 8

- d. Add 50 μ l of each **Sample**, in duplicate, to the designated wells and mix the contents.
- e. Cover with a **Plate Cover** and incubate at room temperature (18°C to 25°C) for 3 hours, if available on a microplate shaker at 200 rpm.
- f. Remove **Plate Cover** and empty wells. Wash the microwell strips 6 times with approximately 400 μ l Wash Buffer per well with thorough aspiration of microwell contents between washes. Take care not to scratch the surface of the microwells.

After the last wash, tap microwell strips on absorbent pad or paper towel to remove excess Wash Buffer. Use the microwell strips immediately after washing or place upside down on a wet absorbent paper for no longer than 15 minutes. Do not allow wells to dry.

- g. Pipette 100 μ l of **TMB Substrate Solution** to all wells, including the blank wells.
- h. Incubate the microwell strips at room temperature (18° to 25°C) for about 10 minutes. Avoid direct exposure to intense light.

The colour development on the plate should be monitored and the substrate reaction stopped (see point i. of this protocol) before positive wells are no longer properly recordable. Determination of the ideal time period for colour development has to be done individually for each assay.

It is recommended to add the stop solution when the highest standard has developed a dark blue colour.

Alternatively the colour development can be monitored by the ELISA reader at 620 nm. The substrate reaction should be stopped as soon as Standard 1 has reached an OD of 0.6 – 0.65.

- i. Stop the enzyme reaction by quickly pipetting 100 μ l of **Stop Solution** into each well, including the blank wells. It is important that the Stop Solution is spread quickly and uniformly throughout the microwells to completely inactivate the enzyme. Results must be read immediately after the Stop Solution is added or within one hour if the microwell strips are stored at 2 - 8°C in the dark.
- j. Read absorbance of each microwell on a spectro-photometer using 450 nm as the primary wave length (optionally 620 nm as the

reference wave length; 610 nm to 650 nm is acceptable). Blank the plate reader according to the manufacturer's instructions by using the blank wells. Determine the absorbance of both the samples and the human IFN- γ standards.

Note: In case of incubation without shaking the obtained O.D. values may be lower than indicated below. Nevertheless the results are still valid.

11 Calculation of Results

- Calculate the average absorbance values for each set of duplicate standards and samples. Duplicates should be within 20 per cent of the mean.
- Create a standard curve by plotting the mean absorbance for each standard concentration on the ordinate against the human IFN- γ concentration on the abscissa. Draw a best fit curve through the points of the graph.
- To determine the concentration of circulating human IFN- γ for each sample, first find the mean absorbance value on the ordinate and extend a horizontal line to the standard curve. At the point of intersection, extend a vertical line to the abscissa and read the corresponding human IFN- γ concentration.
- ***Samples have been diluted 1:2, thus the concentration read from the standard curve must be multiplied by the dilution factor (x 2).**
- It is suggested that each testing facility establishes a control sample of known human IFN- γ concentration and runs this additional control with each assay. If the values obtained are not within the expected range of the control, the assay results may be invalid.
- A representative standard curve is shown in Figure 4. This curve cannot be used to derive test results. Every laboratory must prepare a standard curve for each group of microwell strips assayed.

* N.B: There is a common dilution factor for samples due to the conjugate which must then be included in the calculation. The samples contribute 100 μ l to the final volume per well. These 100 μ l are composed of 50 μ l of sample diluent plus 50 μ l of the sample. This is a 1:2 dilution.

The remaining 50 μ l to give 150 μ l are due to the addition of 50 μ l conjugate to all wells.

50 μ l sample diluent and 50 μ l conjugate results in 100 μ l reconstitution volume, addition of 50 μ l sample (50 μ l + 50 μ l = 1:2 dilution)

Figure 4

Representative standard curve for human IFN- γ Instant ELISA. Human IFN- γ was diluted in serial 2-fold steps in Sample Diluent, each symbol represents the mean of 3 parallel titrations.

Do not use this standard curve to derive test results. A standard curve must be run for each group of microwell strips assayed.

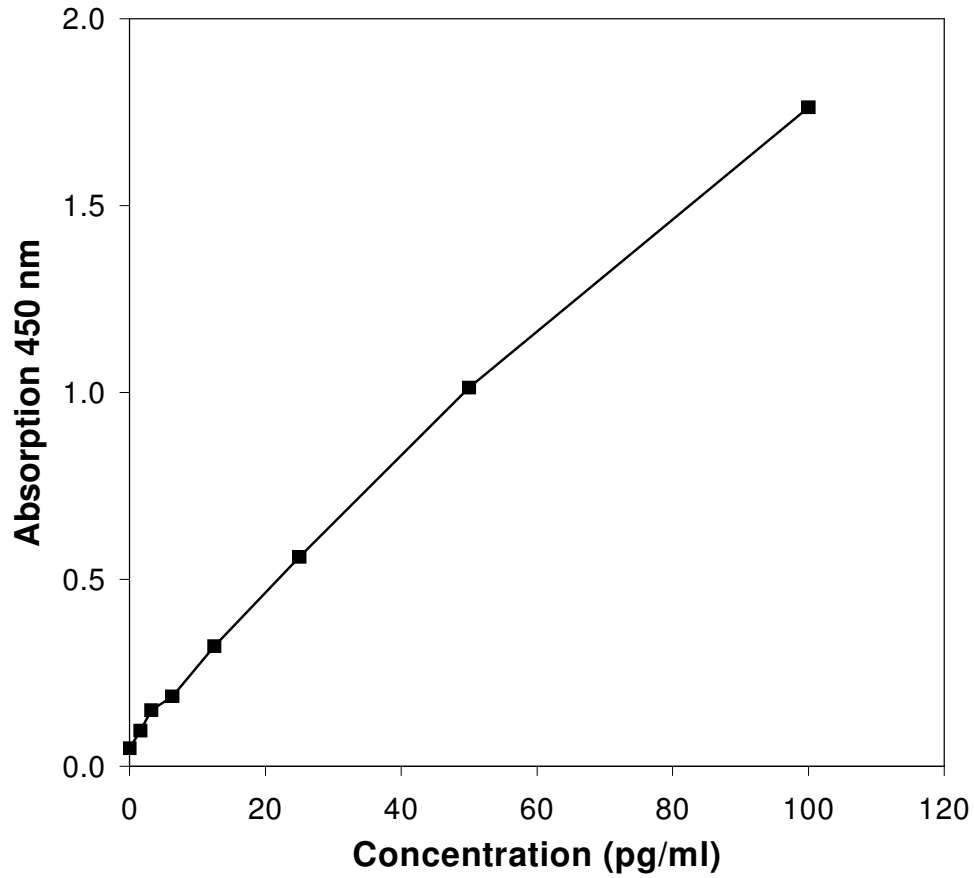


Table 2

Typical data using the human IFN- γ INSTANT ELISA

Measuring wavelength: 450 nm

Reference wavelength: 620 nm

Standard	human IFN- γ Concentration (pg/ml)	O.D. (450 nm)	O.D. Mean	C.V. (%)
1	100.00	1.858	1.763	5.4
	100.00	1.668		
2	50.00	1.057	1.013	4.4
	50.00	0.968		
3	25.00	0.580	0.560	3.6
	25.00	0.540		
4	12.50	0.318	0.321	0.9
	12.50	0.324		
5	6.25	0.184	0.187	1.3
	6.25	0.189		
6	3.13	0.152	0.150	1.7
	3.13	0.147		
7	1.56	0.091	0.095	3.7
	1.56	0.098		
Blank	0	0.047	0.048	
	0	0.048		

The OD values of the standard curve may vary according to the conditions of assay performance (e.g. operator, pipetting technique, washing technique or temperature effects). Furthermore shelf life of the kit may affect enzymatic activity and thus colour intensity. Values measured are still valid.

12 Limitations

- Since exact conditions may vary from assay to assay, a standard curve must be established for every run.
- Bacterial or fungal contamination of either screen samples or reagents or cross-contamination between reagents may cause erroneous results.
- Disposable pipette tips, flasks or glassware are preferred, reusable glassware must be washed and thoroughly rinsed of all detergents before use.
- Improper or insufficient washing at any stage of the procedure will result in either false positive or false negative results. Empty wells completely before dispensing fresh wash solution, fill with Wash Buffer as indicated for each wash cycle and do not allow wells to sit uncovered or dry for extended periods.
- The use of radioimmunotherapy has significantly increased the number of patients with human anti-mouse IgG antibodies (HAMA). HAMA may interfere with assays utilizing murine monoclonal antibodies leading to both false positive and false negative results. Serum samples containing antibodies to murine immunoglobulins can still be analysed in such assays when murine immunoglobulins (serum, ascitic fluid, or monoclonal antibodies of irrelevant specificity) are added to the Sample.

13 Performance Characteristics

13.1 Sensitivity

The limit of detection of human IFN- γ defined as the analyte concentration resulting in an absorbance significantly higher than that of the dilution medium (mean plus 2 standard deviations) was determined to be 0.66 pg/ml (mean of 6 independent assays).

13.2 Reproducibility

13.2.1 Intra-assay

Reproducibility within the assay was evaluated in 3 independent experiments. Each assay was carried out with 6 replicates of 7 serum samples containing different concentrations of human IFN- γ . 2 standard curves were run on each plate. Data below show the mean human IFN- γ concentration and the coefficient of variation for each sample (see Table 3). The calculated overall intra-assay coefficient of variation was 5.3%.

Table 3

The Mean human IFN- γ concentration and the coefficient of variation for each sample.

Positive Sample	Experiment	human IFN- γ Concentration (pg/ml)	Coefficient of Variation (%)
1	1	181	3
	2	169	3
	3	174	4
2	1	111	3
	2	97	4
	3	102	7
3	1	63	11
	2	52	4
	3	53	9
4	1	107	1
	2	113	3
	3	95	7
5	1	115	2
	2	101	5
	3	118	3
6	1	77	8
	2	63	8
	3	76	5
7	1	69	9
	2	58	0
	3	74	0

13.2.2 Inter-assay

Assay to assay reproducibility within one laboratory was evaluated in 3 independent experiments by 3 technicians. Each assay was carried out with 6 replicates of 7 serum samples containing different concentrations of human IFN- γ . 2 standard curves were run on each plate. Data below (see Table 4) show the mean human IFN- γ concentration and the coefficient of variation calculated on 18 determinations of each sample. The calculated overall coefficient of variation was 8.8%.

Table 4

The mean human IFN- γ concentration and the coefficient of variation calculated on 18 determinations of each sample.

Sample	human IFN- γ Concentration (pg/ml)	Coefficient of Variation (%)
1	175	3.5
2	103	6.6
3	56	11.2
4	105	8.9
5	111	8.1
6	72	10.9
7	67	12.7

13.3 Spike Recovery

The spike recovery was evaluated by spiking 4 levels of human IFN- γ into pooled normal human serum. Recoveries were determined in 3 independent experiments with 6 replicates each. The unspiked serum was used as blank in these experiments. Average recovery ranged from 77% to 83% with an overall mean recovery of 78%.

13.4 Dilution Parallelism

4 serum samples with different levels of human IFN- γ were analysed at serial 2 fold dilutions with 4 replicates each. The recovery ranged from 84% to 118% with an overall mean recovery of 99% (see Table 5).

Table 5

Sample	Dilution	human IFN- γ Concentration (pg/ml)		% Recovery of Exp. Val.
		Expected Value	Observed Value	
1	1:2	--	344.4	--
	1:4	172.2	203.8	118.4
	1:8	101.9	106.3	104.3
	1:16	53.2	44.5	83.7
2	1:2	--	385.7	--
	1:4	192.9	210.0	108.8
	1:8	105.0	108.8	103.7
	1:16	54.4	50.2	92.3
3	1:2	--	396.4	--
	1:4	198.2	219.6	110.8
	1:8	100.8	113.6	103.5
	1:16	56.8	47.7	84.0
4	1:2	--	394.8	--
	1:4	197.4	206.6	104.7
	1:8	103.3	93.8	90.8
	1:16	46.9	39.7	84.8

13.5 Sample Stability

13.5.1 Freeze-Thaw Stability

Aliquots of serum samples (unspiked or spiked) were stored at -20 °C and thawed 5 times, and the human IFN- γ levels determined. There was no significant loss of human IFN- γ immunoreactivity by freezing and thawing.

13.5.2 Storage Stability

Aliquots of serum samples (spiked or unspiked) were stored at -20 °C, 2-8 °C, room temperature (RT) and at 37 °C, and the human IFN- γ level determined after 24 h. There was no significant loss of human IFN- γ immunoreactivity during storage under above conditions.

13.6 Comparison of Serum and Plasma

From two individuals, serum as well as EDTA and citrate, and heparin plasma obtained at the same time point were evaluated. IFN- γ concentrations were not significantly different and therefore all these body fluids are suitable for the assay. It is nevertheless highly recommended to assure the uniformity of blood preparations.

13.7 Specificity

To define the specificity of this ELISA several proteins were tested for cross reactivity. There was no cross reactivity observed.

13.8 Expected Values

A panel of 22 randomly selected sera from apparently healthy blood donors (males and females) was tested for human IFN- γ . The detected human IFN- γ levels ranged between less than 1.5 and 168 pg/ml with a mean level of 10.4 pg/ml and a standard deviation of +/- 35 pg/ml (13 samples less than 1.5 pg/ml).

13.9 Calibration

This immunoassay is calibrated with highly purified recombinant IFN- γ , which has been evaluated against the International Reference Standard NIBSC 82/587 and has been shown to be equivalent. NIBSC 82/587 is quantitated in International Units (IU), 1IU corresponding to 50pg IFN- γ .

14 Bibliography

- 1) Aoki, Y., Katoh, O., Nakanishi, Y., Kuroki, S., and Yamada, H. (1994). A comparison study of IFN-gamma, ADA, and CA125 as the diagnostic parameters in tuberculous pleuritis. *Respir. Med.* 88, 139-143.
- 2) Capobianchi, M. R., Ameglio, F., Tosi, R., and Dolei, A. (1985). Differences in the expression and release of DR, BR, and DQ molecules in human cells treated with recombinant interferon gamma: comparison to other interferons. *Hum. Immunol.* 13, 1-11.
- 3) Ciampolillo, A., Guastamacchia, E., Caragiulo, L., Lollino, G., De Robertis, O., Lattanzi, V., and Giorgino, R. (1993). In vitro secretion of interleukin-1 beta and interferon-gamma by peripheral blood lymphomononuclear cells in diabetic patients. *Diabetes Res. Clin. Pract.* 21, 87-93.
- 4) Cunningham, A. L., Nelson, P. A., Fathman, C. G., and Merigan, T. C. (1985). Interferon gamma production by herpes simplex virus antigen-specific T cell clones from patients with recurrent herpes labialis. *J. Gen. Virol.* 66, 249-258.
- 5) Davidson, P. M., Creati, L., Wood, P. R., Robertson, D. M., and Hosking, C. S. (1993). Lymphocyte production of gamma-interferon as a test for non-tuberculous mycobacterial lymphadenitis in childhood. *Eur. J. Pediatr.* 152, 31-35.
- 6) Edwards, B. S., Merritt, J. A., Fuhlbrigge, R. C., and Borden, E. C. (1985). Low doses of interferon alpha result in more effective clinical natural killer cell activation. *J. Clin. Invest.* 75, 1908-1913.
- 7) Gajewski, T. F., and Fitch, F. W. (1993). Anti-proliferative effect of IFN-gamma in immune regulation. I. IFN-gamma inhibits the proliferation of Th2 but not Th1 murine helper T lymphocyte clones. *J. Immunol.* 140, 4245-4252.
- 8) Le thi Bich Thuy, Queen, C., and Fauci, A. S. (1986). Interferon-gamma induces light chain synthesis in interleukin 2 stimulated human B cells. *Eur. J. Immunol.* 16, 547-550.

- 9) Mosmann, T. R., Cherwinski, H., Bond, M. W., Giedlin, M. A., and Coffman, R. L. (1986). Two types of murine helper T cell clone. I. Definition according to profiles of lymphokine activities and secreted proteins. *J. Immunol.* 136, 2348-2357.
- 10) Nast, C. C., Zuo, X. J., Prehn, J., Danovitch, G. M., Wilkinson, A., and Jordan, S. C. (1994). Gamma-interferon gene expression in human renal allograft fine-needle aspirates. *Transplantation* 57,498-502.
- 11) Naylor, S. L., Sakaguchi, A. Y., Shows, T. B., Law, M. L., Goeddel, D. V., and Gray, P. W. (1983). Human immune interferon gene is located on chromosome 12. *J. Exp. Med.* 157, 1020-1027.
- 12) Olsson, T. Multiple sclerosis, cerebrospinal fluid. (1994). *Ann. Neurol.* 36 Suppl, 100-102.
- 13) Romagnani, S., Giudizi, M. G., Biagiotti, R., Almerigogna, F., Mingari, C., Maggi, E., Liang, C. M., and Moretta, L. (1986). B cell growth factor activity of interferon-gamma. Recombinant human interferon-gamma promotes proliferation of anti-mu-activated human B lymphocytes. *J. Immunol.* 136, 3513-3516.
- 14) Sampaio, E. P., Kaplan, G., Miranda, A., Nery, J. A., Miguel, C. P., Viana, S. M., and Sarno, E. N. (1993). The influence of thalidomide on the clinical and immunologic manifestation of erythema nodosum leprosum. *J. Infect. Dis.* 168, 408-414.
- 15) Sastre, L., Roman, J. M., Teplow, D. B., Dreyer, W. J., Gee, C. E., Larson, R. S., Roberts, T. M., and Springer, T. A. (1986). A partial genomic DNA clone for the alpha subunit of the mouse complement receptor type 3 and cellular adhesion molecule Mac-1. *Proc. Natl. Acad. Sci. U. S. A.* 83, 5644-5648.
- 16) Shinde, S. R., Chiplunkar, S. V., Butlin, R., Samson, P. D., Deo, M. G., and Gangal, S. G. (1993). Lymphocyte proliferation, IFN-gamma production and limiting dilution analysis of T-cell responses to ICRC and Mycobacterium leprae antigens in leprosy patients. *Int. J. Lepr. Other Mycobact. Dis.* 61, 51-58.
- 17) Sidman, C. L., Marshall, J. D., Shultz, L. D., Gray, P. W., and Johnson, H. M. (1984). Gamma-interferon is one of several direct B cell-maturing lymphokines. *Nature* 309, 801-804.

- 18) Soliman, A. A., el Aggan, H. A., el Hefnawy, A. M., Mahmoud, S. A., and Abo Deya, S. H. (1994). The value of ascites adenosine deaminase activity and interferon gamma level in discriminating tuberculous from non-tuberculous ascites. *J. Egypt. Soc. Parasitol.* 24, 93-105.
- 19) Suomalainen, H., Soppi, E., Laine, S., and Isolauri, E. (1993). Immunologic disturbances in cow's milk allergy, 2: Evidence for defective interferon-gamma generation. *Pediatr. Allergy Immunol.* 4, 203-207.
- 20) Tang, M. L. K., Kemp, A. S., Thorburn, J., and Hill, D. J. (1994). Reduced interferon-gamma secretion in neonates and subsequent atopy. *Lancet* 344, 983-985.
- 21) Urban, J. L., Shepard, H. M., Rothstein, J. L., Sugarman, B. J., and Schreiber, H. (1986). Tumor necrosis factor: a potent effector molecule for tumor cell killing by activated macrophages. *Proc. Natl. Acad. Sci. U. S. A.* 83, 5233-5237.

For literature update refer to www.bendermedsystems.com/44.html

15 Ordering Information

For orders please contact:

Europe-Headquarters

Bender MedSystems GmbH
Campus Vienna Biocenter 2
A-1030 Vienna, Austria, Europe
phone: +43 1 796 40 40 ext. 114
fax: +43 1 796 40 40 ext. 400
e-mail: order@bendermedsystems.com

USA

Bender MedSystems, Inc.
849 Hinckley Road
Burlingame, CA 94010, USA
toll-free phone: +1 (866) 952 2112
toll-free fax: +1 (877) 952 2112
phone: +1 (650) 952 2112
fax: +1 (650) 952 2252

For technical information please contact:

e-mail: techserv@bendermedsystems.com
www.bendermedsystems.com

Cat.No. BMS228INST human IFN- γ INSTANT ELISA

16 Reagent Preparation Summary

16.1 Wash Buffer

Add **Wash Buffer Concentrate** 20 x (25 ml) to 475 ml distilled water

17 Test Protocol Summary

- Place standard strips in position A1/A2 to H1/H2.
- Add 100 µl **distilled water** to sample wells.
- Add **distilled water**, in duplicate, to all standard and blank wells as indicated on the label of the standard strips.
- Add 50 µl **Sample** to designated wells.
- Cover microwell strips and incubate 3 hours at room temperature (18° to 25°C) on a microplate shaker at 200 rpm.
- Empty and wash microwell strips 6 times with 400 µl **Wash Buffer**.
- Add 100 µl of **TMB Substrate Solution** to all wells including blank wells.
- Incubate the microwell strips for about 10 minutes at room temperature (18° to 25°C).
- Add 100 µl **Stop Solution** to all wells including blank wells.
- Blank microwell reader and measure colour intensity at 450 nm.

Note: Samples have been diluted 1:2, thus the concentration read from the standard curve must be multiplied by the dilution factor (x 2).